



[Go to Product page](#)

Datasheet for ABIN952866

anti-IGKV A18 antibody (C-Term)

2 Images

Overview

Quantity:	0.4 mL
Target:	IGKV A18
Binding Specificity:	AA 77-107, C-Term
Reactivity:	Human
Host:	Rabbit
Clonality:	Polyclonal
Conjugate:	This IGKV A18 antibody is un-conjugated
Application:	Western Blotting (WB), Enzyme Immunoassay (EIA)

Product Details

Immunogen:	KLH conjugated synthetic peptide between 77-107 amino acids from the C-terminal region of human IGKV A18
Isotype:	Ig Fraction
Cross-Reactivity (Details):	Species reactivity (tested):Human.
Purification:	Affinity chromatography on Protein A

Target Details

Target:	IGKV A18
Abstract:	IGKV A18 Products
Molecular Weight:	13,182 Da

Target Details

Gene ID: 9606

Application Details

Application Notes: Optimal working dilution should be determined by the investigator.

Restrictions: For Research Use only

Handling

Format: Liquid

Concentration: 0.25 mg/mL

Buffer: PBS, 0,09 % sodium azide

Preservative: Sodium azide

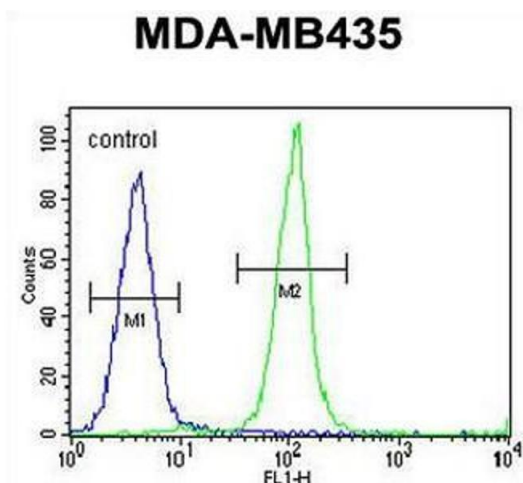
Precaution of Use: This product contains sodium azide: a POISONOUS AND HAZARDOUS SUBSTANCE which should be handled by trained staff only.

Handling Advice: Avoid repeated freezing and thawing.

Storage: 4 °C/-20 °C

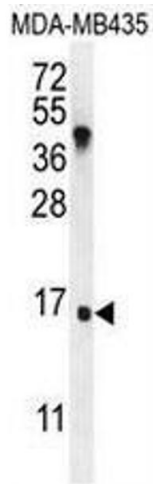
Storage Comment: Store the antibody undiluted at 2-8 °C for one month or (in aliquots) at -20 °C for longer.

Images



Flow Cytometry

Image 1. IGKV A18 Antibody (C-term) flow cytometric analysis of MDA-MB435 cells (right histogram) compared to a negative control cell (left histogram). FITC-conjugated goat-anti-rabbit secondary antibodies were used for the analysis.



Western Blotting

Image 2. IGKV A18 Antibody (C-term) western blot analysis in MDA-MB435 cell line lysates (35µg/lane). This demonstrates the IGKVA18 antibody detected the IGKVA18 protein (arrow).