

Datasheet for ABIN952871
anti-IGSF1 antibody (C-Term)[Go to Product page](#)

2 Images

Overview

Quantity:	0.4 mL
Target:	IGSF1 (INHBP)
Binding Specificity:	AA 1273-1301, C-Term
Reactivity:	Human, Mouse
Host:	Rabbit
Clonality:	Polyclonal
Conjugate:	This IGSF1 antibody is un-conjugated
Application:	Western Blotting (WB), Immunohistochemistry (Paraffin-embedded Sections) (IHC (p)), Enzyme Immunoassay (EIA)

Product Details

Immunogen:	KLH conjugated synthetic peptide between 1273-1301 amino acids from the C-terminal region of human IGSF1
Isotype:	Ig Fraction
Specificity:	This antibody reacts to IGSF1.
Cross-Reactivity (Details):	Species reactivity (tested): Human and Mouse.
Purification:	Affinity chromatography on Protein A

Target Details

Target:	IGSF1 (INHBP)
---------	---------------

Target Details

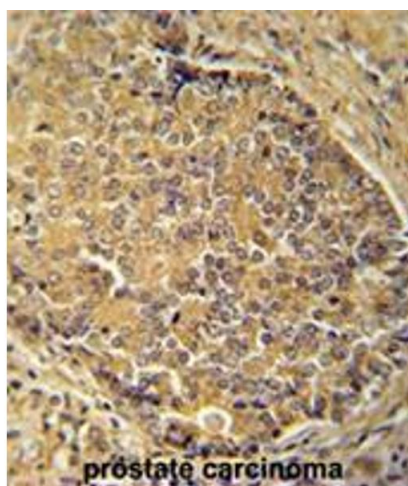
Alternative Name:	IGSF1 / PGSF2 (INHBP Products)
Background:	<p>This gene encodes a member of the immunoglobulin-like domain-containing superfamily. Proteins in this superfamily contain varying numbers of immunoglobulin-like domains and are thought to participate in the regulation of interactions between cells. Multiple transcript variants encoding different isoforms have been found for this gene. Synonyms: IGDC1, Immunoglobulin superfamily member 1, Immunoglobulin-like domain-containing protein 1, Inhibin-binding protein, KIAA0364, Pituitary gland specific factor 2, p120</p>
Molecular Weight:	148936 Da
Gene ID:	3547
NCBI Accession:	NP_001164433

Application Details

Application Notes:	Optimal working dilution should be determined by the investigator.
Restrictions:	For Research Use only

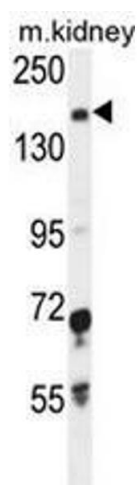
Handling

Format:	Liquid
Concentration:	0.25 mg/mL
Buffer:	PBS, 0.09 % (W/V) sodium azide
Preservative:	Sodium azide
Precaution of Use:	This product contains sodium azide: a POISONOUS AND HAZARDOUS SUBSTANCE which should be handled by trained staff only.
Handling Advice:	Avoid repeated freezing and thawing.
Storage:	4 °C/-20 °C
Storage Comment:	Store the antibody undiluted at 2-8 °C for one month or (in aliquots) at -20 °C for longer.



Immunohistochemistry (Paraffin-embedded Sections)

Image 1. IGSF1 antibody (C-term) immunohistochemistry analysis in formalin fixed and paraffin embedded human prostate carcinoma followed by peroxidase conjugation of the secondary antibody and DAB staining. This data demonstrates the use of the IGSF1 antibody (C-term) for immunohistochemistry. Clinical relevance has not been evaluated.



Western Blotting

Image 2. IGSF1 Antibody (C-term) western blot analysis in mouse kidney tissue lysates (35µg/lane). This demonstrates the IGSF1 antibody detected the IGSF1 protein (arrow).