

Datasheet for ABIN952880
anti-IKZF1 antibody (C-Term)

3 Images

[Go to Product page](#)

Overview

Quantity:	0.4 mL
Target:	IKZF1
Binding Specificity:	AA 422-452, C-Term
Reactivity:	Human
Host:	Rabbit
Clonality:	Polyclonal
Conjugate:	This IKZF1 antibody is un-conjugated
Application:	Western Blotting (WB), Flow Cytometry (FACS), Immunohistochemistry (Paraffin-embedded Sections) (IHC (p)), Enzyme Immunoassay (EIA)

Product Details

Immunogen:	Synthetic peptide - KLH conjugated - corresponding to the C-terminal region (between 422-452aa) of human IKZF1.
Isotype:	Ig Fraction
Specificity:	This antibody detects human IKZF1 at c-term.
Cross-Reactivity (Details):	Species reactivity (tested):Human
Purification:	Purified through a protein A column; followed by peptide affinity purification.

Target Details

Target:	IKZF1
---------	-------

Target Details

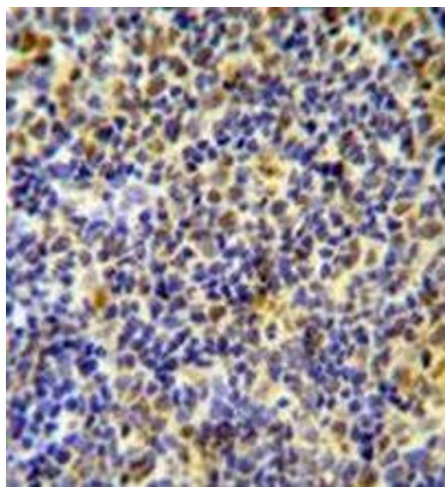
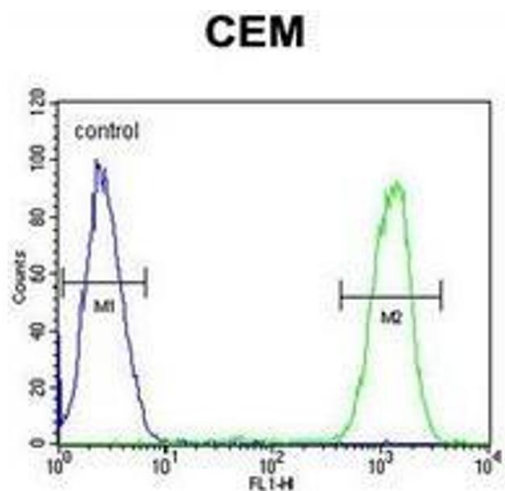
Alternative Name:	IKZF1 / IKAROS (IKZF1 Products)
Background:	Ikaros functions in the specification and the maturation of the T lymphocyte. It also interacts with a critical control element in the terminal deoxynucleotidyltransferase promoter as well as with the promoters for other genes expressed during early stages of B and T cell development.Synonyms: DNA-binding protein Ikaros, IK1, Ikaros family zinc finger protein 1, LYF-1, LYF1, Lymphoid transcription factor LyF-1, ZNFN1A1
Gene ID:	10320
NCBI Accession:	NP_001207694
Pathways:	Production of Molecular Mediator of Immune Response

Application Details

Application Notes:	Optimal working dilution should be determined by the investigator.
Restrictions:	For Research Use only

Handling

Format:	Liquid
Concentration:	0.25 mg/mL
Buffer:	PBS with 0.09 % (W/V) Sodium Azide.
Preservative:	Sodium azide
Precaution of Use:	This product contains sodium azide: a POISONOUS AND HAZARDOUS SUBSTANCE which should be handled by trained staff only.
Handling Advice:	Avoid repeated freezing and thawing.
Storage:	4 °C/-20 °C
Storage Comment:	Store the antibody undiluted at 2-8 °C for one month or (in aliquots) at -20 °C for longer.



Flow Cytometry

Image 1. Flow cytometric analysis of CEM cells (right histogram) compared to a negative control cell (left histogram) using IKZF1/IKAROS Antibody (C-term), followed by FITC-conjugated goat-anti-rabbit secondary antibodies.

Immunohistochemistry (Paraffin-embedded Sections)

Image 2. Immunohistochemistry analysis in formalin fixed and paraffin embedded human tonsil tissue using IKZF1/IKAROS Antibody (C-term), followed by peroxidase conjugation of the secondary antibody and DAB staining. This data demonstrates the use of the IKZF1 antibody for IHC. Clinical relevance has not been evaluated.

Western Blotting

Image 3. Western blot analysis in CEM cell line lysates (35ug/lane) using IKZF1/IKAROS Antibody (C-term). This demonstrates the IKZF1 antibody detected the IKZF1 protein (arrow).