

Datasheet for ABIN952885
anti-IL28B antibody (N-Term)

2 Images

[Go to Product page](#)

Overview

Quantity:	0.4 mL
Target:	IL28B
Binding Specificity:	AA 33-63, N-Term
Reactivity:	Human
Host:	Rabbit
Clonality:	Polyclonal
Conjugate:	This IL28B antibody is un-conjugated
Application:	Western Blotting (WB), Enzyme Immunoassay (EIA)

Product Details

Immunogen:	Synthetic peptide - KLH conjugated - corresponding to the N-terminal region (between 33-63aa) of human Interleukin-28B
Isotype:	Ig Fraction
Specificity:	This antibody recognizes Interleukin-28B at N-term.
Cross-Reactivity (Details):	Species reactivity (tested):Human
Purification:	Purified through a Protein A column followed by peptide affinity purification

Target Details

Target:	IL28B
Alternative Name:	Interleukin-28B (IL28B Products)

Target Details

Background: The IL28B gene encodes a cytokine distantly related to type I interferons and the IL-10 family. IL28B, IL28A, and IL29 are three closely related cytokine genes that form a cytokine gene cluster on a chromosomal region mapped to 19q13. Expression of the cytokines encoded by the three genes can be induced by viral infection. All three cytokines have been shown to interact with a heterodimeric class II cytokine receptor that consists of interleukin 10 receptor, beta (IL10RB) and interleukin 28 receptor, alpha (IL28RA). Synonyms: IFN-lambda-3, Ifnl3, IL28, IL28b, Interferon lambda-3

Gene ID: 282617

NCBI Accession: [NP_742151](#)

Application Details

Application Notes: Optimal working dilution should be determined by the investigator.

Restrictions: For Research Use only

Handling

Format: Liquid

Concentration: 0.25 mg/mL

Buffer: PBS with 0.09 % (W/V) Sodium azide

Preservative: Sodium azide

Precaution of Use: This product contains sodium azide: a POISONOUS AND HAZARDOUS SUBSTANCE which should be handled by trained staff only.

Handling Advice: Avoid repeated freezing and thawing.

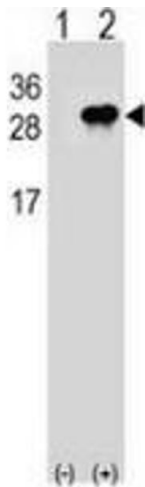
Storage: 4 °C/-20 °C

Storage Comment: Store undiluted at 2-8 °C for one month or (in aliquots) at -20 °C for longer.



Western Blotting

Image 1. Western blot analysis in SK-BR-3 cell line lysates (35ug/lane) using Interleukin-28B Antibody (N-term). This demonstrates the Interleukin-28B antibody detected the Interleukin-28B protein (arrow).



Western Blotting

Image 2. Western blot analysis of Interleukin-28B (arrow) using rabbit polyclonal Interleukin-28B (N-term): 293 cell lysates (2ug/lane) either nontransfected (Lane 1) or transiently transfected (Lane 2) with the IL28B gene.