

Datasheet for ABIN952890

anti-IMMP2L antibody (Middle Region)**3** Images[Go to Product page](#)

Overview

Quantity:	0.4 mL
Target:	IMMP2L
Binding Specificity:	AA 88-117, Middle Region
Reactivity:	Human
Host:	Rabbit
Clonality:	Polyclonal
Conjugate:	This IMMP2L antibody is un-conjugated
Application:	Western Blotting (WB), Flow Cytometry (FACS), Immunohistochemistry (Paraffin-embedded Sections) (IHC (p))

Product Details

Immunogen:	KLH conjugated synthetic peptide between 88~117 amino acids from the Central region of Human IMMP2L
Isotype:	Ig Fraction
Specificity:	This antibody recognizes Human IMMP2L (Center).
Purification:	Protein A column, followed by peptide affinity purification

Target Details

Target:	IMMP2L
Alternative Name:	IMMP2L (IMMP2L Products)

Target Details

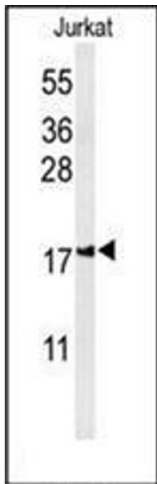
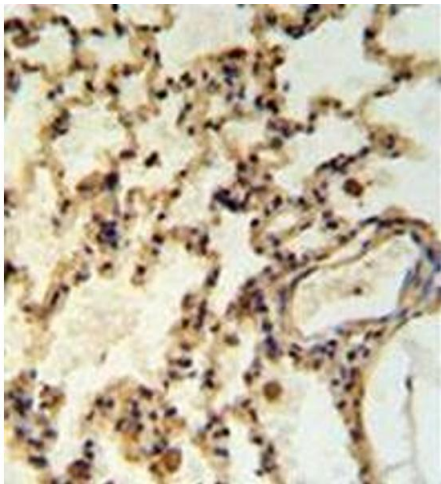
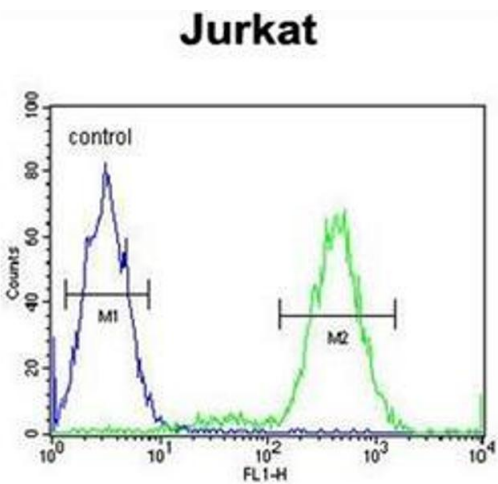
Background:	IMP2L complex generates mature, active proteins in the mitochondrial intermembrane space by proteolytically removing the mitochondrial targeting presequence of nuclear-encoded proteins. IMP1 (IMMP1L, MIM 612323) and IMP2 are the catalytic subunits of the IMP complex. Synonyms: IMP2-like protein, Mitochondrial inner membrane protease subunit 2
Molecular Weight:	19718 Da
Gene ID:	83943
NCBI Accession:	NP_115938

Application Details

Application Notes:	Optimal working dilution should be determined by the investigator.
Restrictions:	For Research Use only

Handling

Format:	Liquid
Concentration:	0.25 mg/mL
Buffer:	PBS containing 0.09 % (W/V) Sodium Azide as preservative
Preservative:	Sodium azide
Precaution of Use:	This product contains sodium azide: a POISONOUS AND HAZARDOUS SUBSTANCE which should be handled by trained staff only.
Handling Advice:	Avoid repeated freezing and thawing.
Storage:	4 °C/-20 °C
Storage Comment:	Store undiluted at 2-8 °C for one month or (in aliquots) at -20 °C for longer.



Flow Cytometry

Image 1. Flow cytometric analysis of Jurkat cells using IMMP2L Antibody (Center) Cat.-No AP52204PU-N (right histogram) compared to a negative control cell (left histogram). FITC-conjugated goat-anti-rabbit secondary antibodies were used for the analysis.

Immunohistochemistry (Paraffin-embedded Sections)

Image 2. Immunohistochemistry analysis in formalin fixed and paraffin embedded rat lung tissue reacted with IMMP2L Antibody (Center) followed by peroxidase conjugation of the secondary antibody and DAB staining.

Western Blotting

Image 3. Western blot analysis of IMMP2L Antibody (Center) in Jurkat cell line lysates (35ug/lane). IMMP2L (arrow) was detected using the purified Pab.