

Datasheet for ABIN952892
anti-IMPDH1 antibody (N-Term)



[Go to Product page](#)

2 Images

Overview

Quantity:	0.4 mL
Target:	IMPDH1
Binding Specificity:	AA 83-113, N-Term
Reactivity:	Human
Host:	Rabbit
Clonality:	Polyclonal
Conjugate:	This IMPDH1 antibody is un-conjugated
Application:	Western Blotting (WB), Immunohistochemistry (Paraffin-embedded Sections) (IHC (p)), Enzyme Immunoassay (EIA)

Product Details

Immunogen:	KLH conjugated synthetic peptide between 83-113 amino acids from the N-terminal region of Human IMPDH1 / IMPD1
Isotype:	Ig Fraction
Specificity:	This antibody recognizes Human IMPDH1 / IMPD1 (N-term).
Purification:	Protein A column, followed by peptide affinity purification

Target Details

Target:	IMPDH1
Alternative Name:	IMPDH1 / IMPD1 (IMPDH1 Products)

Target Details

Background: The protein encoded by this gene acts as a homotetramer to regulate cell growth. The encoded protein is an enzyme that catalyzes the synthesis of xanthine monophosphate (XMP) from inosine-5'-monophosphate (IMP). This is the rate-limiting step in the de novo synthesis of guanine nucleotides. Defects in this gene are a cause of retinitis pigmentosa type 10 (RP10). Several transcript variants encoding different isoforms have been found for this gene. Synonyms: IMP dehydrogenase 1, IMPD 1, IMPDH 1, IMPDH-1, IMPDH-I, Inosine-5'-monophosphate dehydrogenase 1

Molecular Weight: 55406 Da

Gene ID: 3614

NCBI Accession: [NP_001136045](#)

Pathways: [Ribonucleoside Biosynthetic Process](#)

Application Details

Application Notes: Optimal working dilution should be determined by the investigator.

Restrictions: For Research Use only

Handling

Format: Liquid

Concentration: 0.25 mg/mL

Buffer: PBS containing 0.09 % (W/V) Sodium Azide as preservative

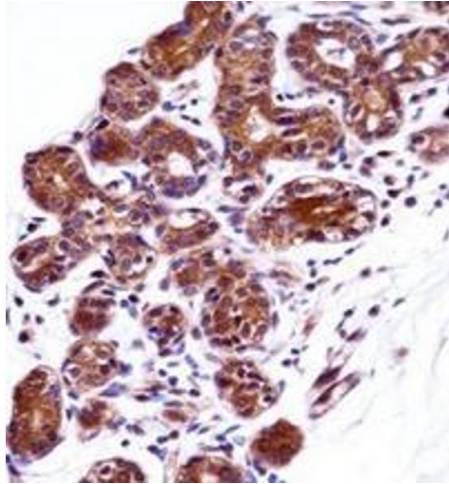
Preservative: Sodium azide

Precaution of Use: This product contains sodium azide: a POISONOUS AND HAZARDOUS SUBSTANCE which should be handled by trained staff only.

Handling Advice: Avoid repeated freezing and thawing.

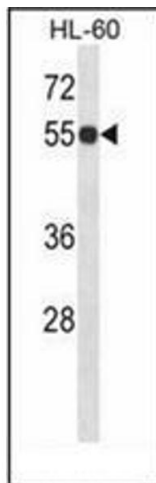
Storage: 4 °C/-20 °C

Storage Comment: Store undiluted at 2-8 °C for one month or (in aliquots) at -20 °C for longer.



Immunohistochemistry (Paraffin-embedded Sections)

Image 1. Immunohistochemistry analysis in formalin fixed and paraffin embedded human breast tissue reacted with IMPDH1 / IMPD1 Antibody (N-term) followed by peroxidase conjugation of the secondary antibody and DAB staining.



Western Blotting

Image 2. Western blot analysis of IMPDH1 / IMPD1 Antibody (N-term) in HL-60 cell line lysates (35ug/lane). This demonstrates the IMPDH1 antibody detected the IMPDH1 protein (arrow).