

Datasheet for ABIN952908
anti-INSC antibody (Middle Region)[Go to Product page](#)

2 Images

Overview

Quantity:	0.4 mL
Target:	INSC
Binding Specificity:	AA 416-446, Middle Region
Reactivity:	Human
Host:	Rabbit
Clonality:	Polyclonal
Conjugate:	This INSC antibody is un-conjugated
Application:	Western Blotting (WB), Immunohistochemistry (Paraffin-embedded Sections) (IHC (p))

Product Details

Immunogen:	KLH conjugated synthetic peptide between 416~446 amino acids from the Central region of Human INSC
Isotype:	Ig Fraction
Specificity:	This antibody recognizes Human INSC (Center).
Purification:	Protein A column, followed by peptide affinity purification

Target Details

Target:	INSC
Alternative Name:	INSC (INSC Products)
Background:	In Drosophila, neuroblasts divide asymmetrically into another neuroblast at the apical side and

Target Details

a smaller ganglion mother cell on the basal side. Cell polarization is precisely regulated by 2 apically localized multiprotein signaling complexes that are tethered by Inscuteable, which regulates their apical localization (Izaki et al., 2006 [PubMed 16458856]). Synonyms: Protein inscuteable homolog

Molecular Weight: 63469 Da

Gene ID: 387755

NCBI Accession: [NP_001027024](#)

Application Details

Application Notes: Optimal working dilution should be determined by the investigator.

Restrictions: For Research Use only

Handling

Format: Liquid

Concentration: 0.25 mg/mL

Buffer: PBS containing 0.09 % (W/V) Sodium Azide as preservative

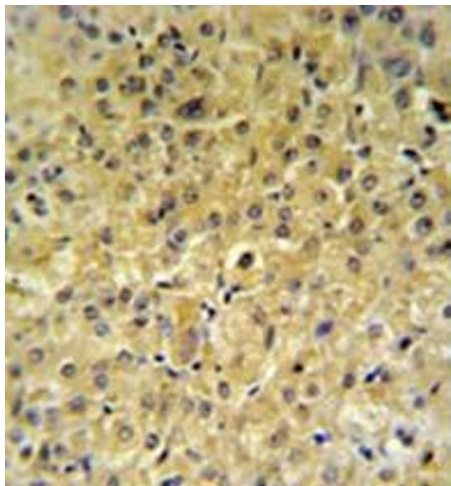
Preservative: Sodium azide

Precaution of Use: This product contains sodium azide: a POISONOUS AND HAZARDOUS SUBSTANCE which should be handled by trained staff only.

Handling Advice: Avoid repeated freezing and thawing.

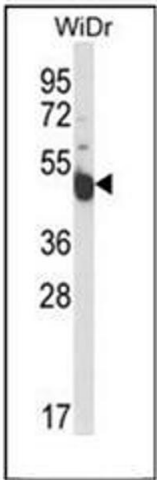
Storage: 4 °C/-20 °C

Storage Comment: Store undiluted at 2-8 °C for one month or (in aliquots) at -20 °C for longer.



Immunohistochemistry (Paraffin-embedded Sections)

Image 1. Immunohistochemistry analysis in formalin fixed and paraffin embedded hepatocarcinoma reacted with INSC Antibody (Center) followed by peroxidase conjugation of the secondary antibody and DAB staining.



Western Blotting

Image 2. Western blot analysis of INSC Antibody (Center) in WiDr cell line lysates (35ug/lane). INSC (arrow) was detected using the purified Pab.