



[Go to Product page](#)

Datasheet for ABIN952909
anti-INSC antibody (C-Term)

2 Images

Overview

Quantity:	0.4 mL
Target:	INSC
Binding Specificity:	AA 416-445, C-Term
Reactivity:	Human, Mouse
Host:	Rabbit
Clonality:	Polyclonal
Conjugate:	This INSC antibody is un-conjugated
Application:	Western Blotting (WB), Immunohistochemistry (Paraffin-embedded Sections) (IHC (p)), Enzyme Immunoassay (EIA)

Product Details

Immunogen:	KLH conjugated synthetic peptide between 416-445 amino acids from the C-terminal region of human INSC
Isotype:	Ig Fraction
Specificity:	This antibody recognizes Human and Mouse INSC (C-term).
Purification:	Protein A column, followed by peptide affinity purification

Target Details

Target:	INSC
Alternative Name:	INSC (INSC Products)

Target Details

Background: In *Drosophila*, neuroblasts divide asymmetrically into another neuroblast at the apical side and a smaller ganglion mother cell on the basal side. Cell polarization is precisely regulated by 2 apically localized multiprotein signaling complexes that are tethered by Inscuteable, which regulates their apical localization (Izaki et al., 2006 [PubMed 16458856]). Synonyms: Protein inscuteable homolog

Molecular Weight: 63469 Da

Gene ID: 387755

NCBI Accession: [NP_001027024](#)

Application Details

Application Notes: Optimal working dilution should be determined by the investigator.

Restrictions: For Research Use only

Handling

Format: Liquid

Concentration: 0.25 mg/mL

Buffer: PBS containing 0.09 % (W/V) Sodium Azide as preservative

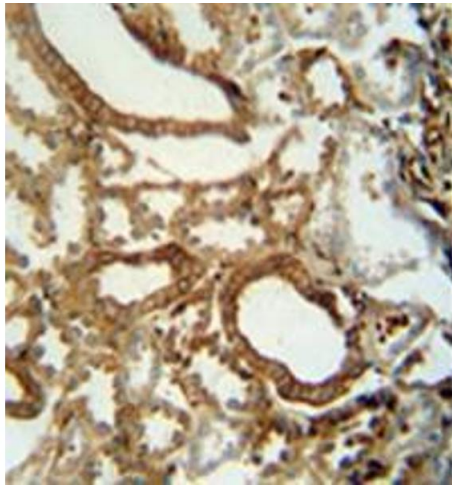
Preservative: Sodium azide

Precaution of Use: This product contains sodium azide: a POISONOUS AND HAZARDOUS SUBSTANCE which should be handled by trained staff only.

Handling Advice: Avoid repeated freezing and thawing.

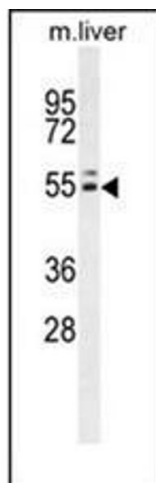
Storage: 4 °C/-20 °C

Storage Comment: Store undiluted at 2-8 °C for one month or (in aliquots) at -20 °C for longer.



Immunohistochemistry (Paraffin-embedded Sections)

Image 1. Immunohistochemistry analysis in formalin fixed and paraffin embedded human kidney tissue reacted with INSC Antibody (C-term) followed by peroxidase conjugation of the secondary antibody and DAB staining.



Western Blotting

Image 2. Western blot analysis of INSC Antibody (C-term) in mouse liver tissue lysates (35ug/lane). This demonstrates the INSC antibody detected the INSC protein (arrow).