



[Go to Product page](#)

Datasheet for ABIN952912  
**anti-IGF2 antibody (Middle Region)**

3 Images

Overview

Quantity:	200 µL
Target:	IGF2
Binding Specificity:	AA 46-77, Middle Region
Reactivity:	Human
Host:	Rabbit
Clonality:	Polyclonal
Conjugate:	This IGF2 antibody is un-conjugated
Application:	Western Blotting (WB), Flow Cytometry (FACS), Immunohistochemistry (Paraffin-embedded Sections) (IHC (p)), Enzyme Immunoassay (EIA)

Product Details

Immunogen:	KLH conjugated synthetic peptide between 46-77 amino acids from the Central region of Human IGF2. Genename: IGF2
Isotype:	Ig Fraction
Specificity:	This antibody recognizes Human and Mouse IGF2 (Center).
Purification:	Protein A column, followed by peptide affinity purification

Target Details

Target:	IGF2
Alternative Name:	Insulin-Like Growth Factor II / IGF2 ( <a href="#">IGF2 Products</a> )

## Target Details

---

**Background:** This gene encodes a member of the insulin family of polypeptide growth factors, which are involved in development and growth. It is an imprinted gene, expressed only from the paternal allele, and epigenetic changes at this locus are associated with Wilms tumour, Beckwith-Wiedemann syndrome, rhabdomyosarcoma, and Silver-Russell syndrome. A read-through INS-IGF2 gene exists, whose 5' region overlaps the INS gene and the 3' region overlaps this gene. Alternatively spliced transcript variants encoding different isoforms have been found for this gene. Synonyms: IGF-II, Somatomedin-A

**Molecular Weight:** 20140 Da

**Gene ID:** 3481

**NCBI Accession:** [NP\\_000603](#)

**Pathways:** [Hormone Activity](#), [Regulation of Hormone Metabolic Process](#), [Regulation of Hormone Biosynthetic Process](#), [Regulation of Carbohydrate Metabolic Process](#), [Activated T Cell Proliferation](#)

## Application Details

---

**Application Notes:** Optimal working dilution should be determined by the investigator.

**Restrictions:** For Research Use only

## Handling

---

**Format:** Liquid

**Concentration:** 0.25 mg/mL

**Buffer:** PBS containing 0.09 % (W/V) Sodium Azide as preservative

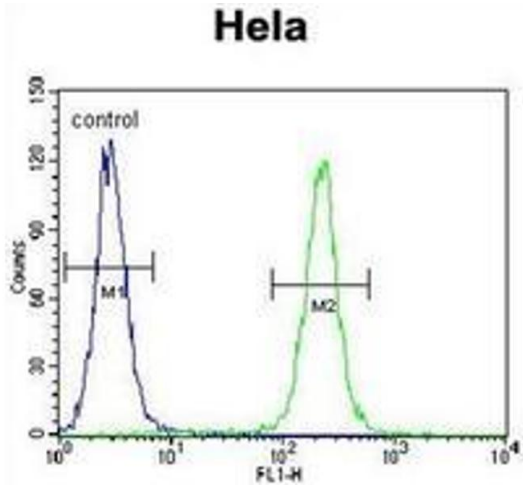
**Preservative:** Sodium azide

**Precaution of Use:** This product contains sodium azide: a POISONOUS AND HAZARDOUS SUBSTANCE which should be handled by trained staff only.

**Handling Advice:** Avoid repeated freezing and thawing.

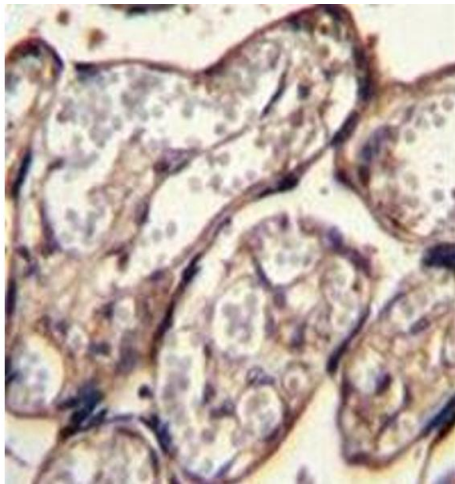
**Storage:** 4 °C/-20 °C

**Storage Comment:** Store undiluted at 2-8 °C for one month or (in aliquots) at -20 °C for longer.



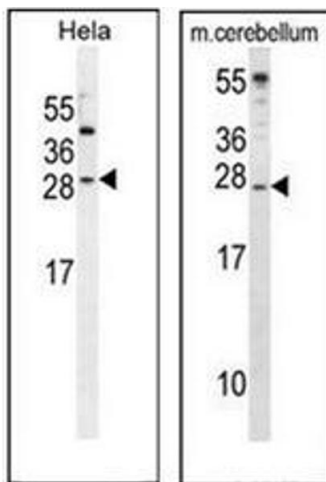
### Flow Cytometry

**Image 1.** Flow cytometric analysis of HeLa cells using IGF2 Antibody (right histogram) compared to a negative control cell (left histogram). FITC-conjugated goat-anti-rabbit secondary antibodies were used for the analysis.



### Immunohistochemistry (Paraffin-embedded Sections)

**Image 2.** Formalin fixed and paraffin embedded human placenta tissue stained with IGF2 Antibody followed by peroxidase conjugation of the secondary antibody and DAB staining.



### Western Blotting

**Image 3.** Western blot analysis of IGF2 Antibody in HeLa and cell line lysates and in Mouse cerebellum tissue lysates (35µg/lane). This demonstrates the IGF2 antibody detected the IGF2 protein (arrow).