



[Go to Product page](#)

Datasheet for ABIN952914  
**anti-ITGA8 antibody (C-Term)**

2 Images

### Overview

Quantity:	0.4 mL
Target:	ITGA8
Binding Specificity:	AA 1032-1061, C-Term
Reactivity:	Human
Host:	Rabbit
Clonality:	Polyclonal
Conjugate:	This ITGA8 antibody is un-conjugated
Application:	Western Blotting (WB), Immunohistochemistry (Paraffin-embedded Sections) (IHC (p)), Enzyme Immunoassay (EIA)

### Product Details

Immunogen:	KLH conjugated synthetic peptide between 1032-1061 amino acids from the C-terminal region of human ITGA8
Isotype:	Ig Fraction
Specificity:	This antibody recognizes Human Integrin alpha-8 / ITGA8 (C-term).
Purification:	Protein A column, followed by peptide affinity purification

### Target Details

Target:	ITGA8
Alternative Name:	Integrin alpha-8 / ITGA8 ( <a href="#">ITGA8 Products</a> )

## Target Details

---

**Background:** Integrin alpha-8/beta-1 functions in the genesis of kidney and probably of other organs by regulating the recruitment of mesenchymal cells into epithelial structures. It recognizes the sequence R-G-D in a wide array of ligands including TNC, FN1, SPP1, TGFB1, TGFB3 and VTN. NPNT is probably its functional ligand in kidney genesis. Neuronal receptor for TNC it mediates cell-cell interactions and regulates neurite outgrowth of sensory and motor neurons.

**Molecular Weight:** 117474 Da

**Gene ID:** 8516

**NCBI Accession:** [NP\\_003629](#)

## Application Details

---

**Application Notes:** Optimal working dilution should be determined by the investigator.

**Restrictions:** For Research Use only

## Handling

---

**Format:** Liquid

**Concentration:** 0.25 mg/mL

**Buffer:** PBS containing 0.09 % (W/V) Sodium Azide as preservative

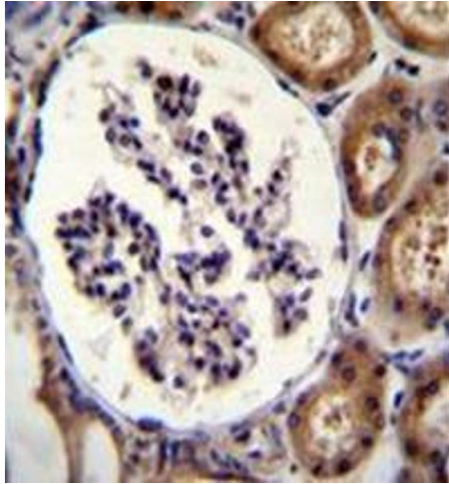
**Preservative:** Sodium azide

**Precaution of Use:** This product contains sodium azide: a POISONOUS AND HAZARDOUS SUBSTANCE which should be handled by trained staff only.

**Handling Advice:** Avoid repeated freezing and thawing.

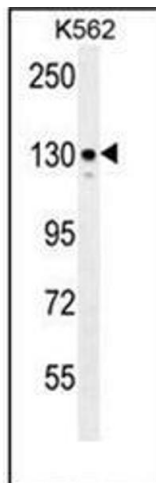
**Storage:** 4 °C/-20 °C

**Storage Comment:** Store undiluted at 2-8 °C for one month or (in aliquots) at -20 °C for longer.



### Immunohistochemistry (Paraffin-embedded Sections)

**Image 1.** Immunohistochemistry analysis in formalin fixed and paraffin embedded human kidney tissue reacted with Integrin alpha-8 / ITGA8 Antibody (C-term) followed which was peroxidase conjugated to the secondary antibody and DAB staining.



### Western Blotting

**Image 2.** Western blot analysis of Integrin alpha-8 / ITGA8 Antibody (C-term) in K562 cell line lysates (35ug/lane). This demonstrates the ITGA8 antibody detected the ITGA8 protein (arrow).