

Datasheet for ABIN952915

anti-Integrin beta 7 antibody (C-Term)[Go to Product page](#)**1** Image

Overview

Quantity:	0.4 mL
Target:	Integrin beta 7 (ITGB7)
Binding Specificity:	AA 736-765, C-Term
Reactivity:	Human
Host:	Rabbit
Clonality:	Polyclonal
Conjugate:	This Integrin beta 7 antibody is un-conjugated
Application:	Western Blotting (WB), Enzyme Immunoassay (EIA)

Product Details

Immunogen:	KLH conjugated synthetic peptide between 736-765 amino acids from the C-terminal region of Human Integrin beta-7
Isotype:	Ig Fraction
Specificity:	This antibody recognizes Human Integrin beta-7 (C-term).
Purification:	Protein A column, followed by peptide affinity purification

Target Details

Target:	Integrin beta 7 (ITGB7)
Alternative Name:	Integrin beta-7 (ITGB7 Products)
Background:	Integrin alpha-4/beta-7 (Peyer patches-specific homing receptor LPAM-1) is an adhesion

Target Details

molecule that mediates lymphocyte migration and homing to gut-associated lymphoid tissue (GALT). Integrin alpha-4/beta-7 interacts with the cell surface adhesion molecules MADCAM1 which is normally expressed by the vascular endothelium of the gastrointestinal tract. Interacts also with VCAM1 and fibronectin, an extracellular matrix component. It recognizes one or more domains within the alternatively spliced CS-1 region of fibronectin. Interactions involves the tripeptide L-D-T in MADCAM1, and L-D-V in fibronectin. Binds to HIV-1 gp120, thereby allowing the virus to enter GALT, which is thought to be the major trigger of AIDS disease. Interaction would involve a tripeptide L-D-I in HIV-1 gp120. Integrin alpha-E/beta-7 (HML-1) is a receptor for E-cadherin.Synonyms: ITGB7, Integrin alpha 4 beta 7, Integrin beta-P, LPAM-1, LPAM1, M290 IEL antigen

Molecular Weight: 86903 Da

Gene ID: 3695

NCBI Accession: [NP_000880](#)

Pathways: [Integrin Complex](#)

Application Details

Application Notes: Optimal working dilution should be determined by the investigator.

Restrictions: For Research Use only

Handling

Format: Liquid

Concentration: 0.25 mg/mL

Buffer: PBS containing 0.09 % (W/V) Sodium Azide as preservative

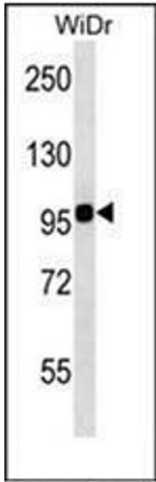
Preservative: Sodium azide

Precaution of Use: This product contains sodium azide: a POISONOUS AND HAZARDOUS SUBSTANCE which should be handled by trained staff only.

Handling Advice: Avoid repeated freezing and thawing.

Storage: 4 °C/-20 °C

Storage Comment: Store undiluted at 2-8 °C for one month or (in aliquots) at -20 °C for longer.



Western Blotting

Image 1. Western blot analysis of ITGB7 Antibody (C-term) in WiDr cell line lysates (35ug/lane). This demonstrates the ITGB7 antibody detected the ITGB7 protein (arrow).