

Datasheet for ABIN952926

anti-IL-26 antibody (Middle Region)[Go to Product page](#)**1** Image

Overview

Quantity:	0.4 mL
Target:	IL-26 (IL26)
Binding Specificity:	AA 94-124, Middle Region
Reactivity:	Human
Host:	Rabbit
Clonality:	Polyclonal
Conjugate:	This IL-26 antibody is un-conjugated
Application:	Western Blotting (WB), Enzyme Immunoassay (EIA)

Product Details

Immunogen:	Synthetic peptide - KLH conjugated - corresponding to the central region (between 94-124aa) of human Interleukin-6 / IL26
Isotype:	Ig Fraction
Specificity:	This antibody recognizes Interleukin-26 / IL26.
Cross-Reactivity (Details):	Species reactivity (tested):Human
Purification:	Purified through a Protein A column followed by peptide affinity purification

Target Details

Target:	IL-26 (IL26)
Alternative Name:	Interleukin-26 / IL26 (IL26 Products)

Target Details

Background:	IL26 is a member of the IL10 family of cytokines. It is a secreted protein and may function as a homodimer. This protein is thought to contribute to the transformed phenotype of T cells after infection by herpesvirus samimiri.Synonyms: AK155, IL-26
Gene ID:	55801
NCBI Accession:	NP_060872

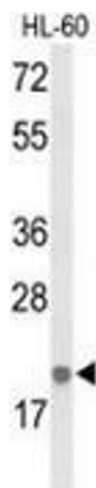
Application Details

Application Notes:	Optimal working dilution should be determined by the investigator.
Restrictions:	For Research Use only

Handling

Format:	Liquid
Concentration:	0.25 mg/mL
Buffer:	PBS with 0.09 % (W/V) Sodium azide
Preservative:	Sodium azide
Precaution of Use:	This product contains sodium azide: a POISONOUS AND HAZARDOUS SUBSTANCE which should be handled by trained staff only.

Images



Western Blotting

Image 1. Western blot analysis of IL26 (arrow) in HL-60 cell line lysates (35ug/lane) using Interleukin-26 / IL26