

Datasheet for ABIN952927
anti-IL-31 antibody (N-Term)



[Go to Product page](#)

3 Images

Overview

Quantity:	0.4 mL
Target:	IL-31 (IL31)
Binding Specificity:	AA 19-49, N-Term
Reactivity:	Human, Mouse
Host:	Rabbit
Clonality:	Polyclonal
Conjugate:	This IL-31 antibody is un-conjugated
Application:	Western Blotting (WB), Flow Cytometry (FACS), Immunohistochemistry (Paraffin-embedded Sections) (IHC (p)), Enzyme Immunoassay (EIA)

Product Details

Immunogen:	KLH conjugated synthetic peptide between 19~49 amino acids from the N-terminal region of Human IL31 Genename: IL31
Isotype:	Ig Fraction
Specificity:	This antibody recognizes Interleukin 31 (N-term).
Purification:	Affinity Chromatography on Protein A

Target Details

Target:	IL-31 (IL31)
Alternative Name:	Interleukin-31 / IL31 (IL31 Products)

Target Details

Background: IL31, which is made principally by activated Th2-type T cells, interacts with a heterodimeric receptor consisting of IL31RA (MIM 609510) and OSMR (MIM 601743) that is constitutively expressed on epithelial cells and keratinocytes. IL31 may be involved in the promotion of allergic skin disorders and in regulating other allergic diseases, such as asthma. Synonyms: IL-31

Molecular Weight: 18205 Da

Gene ID: 386653

NCBI Accession: [NP_001014358](#)

Application Details

Application Notes: Optimal working dilution should be determined by the investigator.

Restrictions: For Research Use only

Handling

Format: Liquid

Concentration: 0.25 mg/mL

Buffer: PBS, 0.09 % (W/V) Sodium Azide

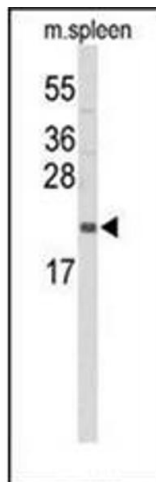
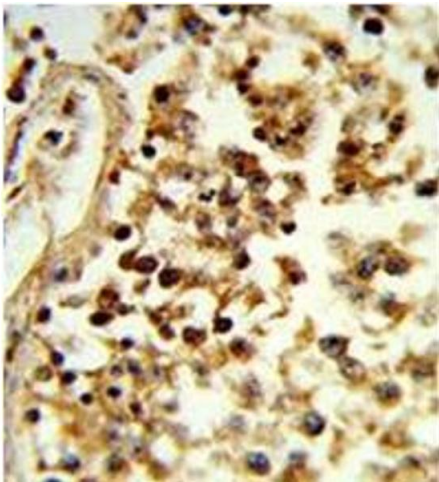
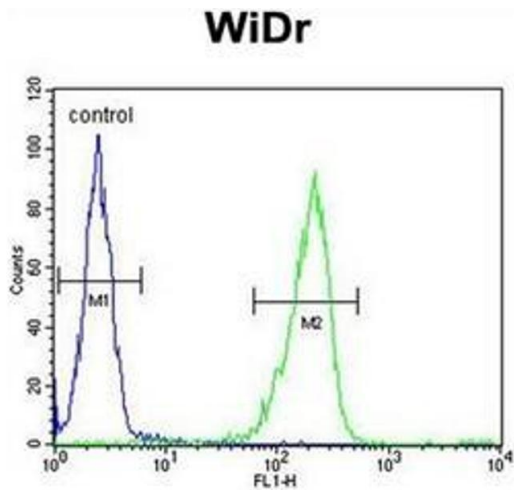
Preservative: Sodium azide

Precaution of Use: This product contains sodium azide: a POISONOUS AND HAZARDOUS SUBSTANCE which should be handled by trained staff only.

Handling Advice: Avoid repeated freezing and thawing.

Storage: 4 °C/-20 °C

Storage Comment: Store the antibody undiluted at 2-8 °C for one month or (in aliquots) at -20 °C for longer.



Flow Cytometry

Image 1. Flow cytometric analysis of WiDr cells using IL31 Antibody (N-term) Cat.-No AP52198PU-N (right histogram) compared to a negative control cell (left histogram). FITC-conjugated goat-anti-rabbit secondary antibodies were used for the analysis.

Immunohistochemistry (Paraffin-embedded Sections)

Image 2. Formalin-fixed and paraffin-embedded human testis tissue reacted with IL31 Antibody (N-term), which was peroxidase-conjugated to the secondary antibody, followed by DAB staining. This data demonstrates the use of this antibody for immunohistochemistry; clinical relevance has not been evaluated.

Western Blotting

Image 3. Western blot analysis of IL31 Antibody (N-term) Cat.-No AP52198PU-N in mouse spleen tissue lysates (35ug/lane). IL31 (arrow) was detected using the purified Pab.