

Datasheet for ABIN952930

**anti-Intrinsic Factor antibody (Middle Region)****4** Images[Go to Product page](#)

## Overview

Quantity:	0.4 mL
Target:	Intrinsic Factor (GIF)
Binding Specificity:	AA 188-218, Middle Region
Reactivity:	Human
Host:	Rabbit
Clonality:	Polyclonal
Conjugate:	This Intrinsic Factor antibody is un-conjugated
Application:	Western Blotting (WB), Immunofluorescence (IF), Flow Cytometry (FACS), Immunohistochemistry (Paraffin-embedded Sections) (IHC (p))

## Product Details

Immunogen:	KLH conjugated synthetic peptide between 188-218 amino acids from the Central region of Human Intrinsic factor Genename: GIF
Isotype:	Ig Fraction
Specificity:	This antibody recognizes Human Intrinsic factor (Center).
Purification:	Protein A column, followed by peptide affinity purification

## Target Details

Target:	Intrinsic Factor (GIF)
Alternative Name:	Intrinsic Factor ( <a href="#">GIF Products</a> )

## Target Details

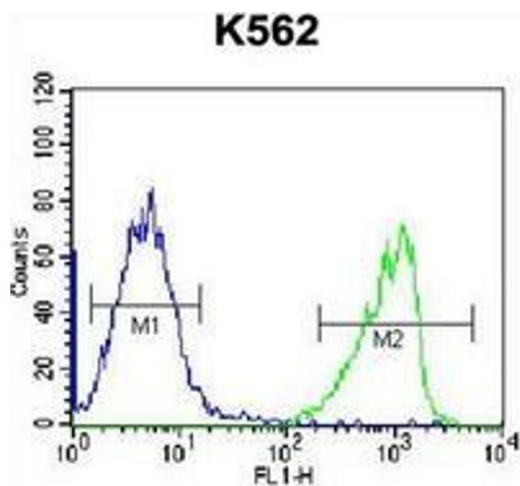
Background:	This gene is a member of the cobalamin transport protein family. It encodes a glycoprotein secreted by parietal cells of the gastric mucosa and is required for adequate absorption of vitamin B12. Vitamin B12 is necessary for erythrocyte maturation and mutations in this gene may lead to congenital pernicious anemia.Synonyms: GIF, Gastric intrinsic factor, IFMH, INF
Molecular Weight:	45416 Da
Gene ID:	2694
NCBI Accession:	<a href="#">NP_005133</a>

## Application Details

Application Notes:	Optimal working dilution should be determined by the investigator.
Restrictions:	For Research Use only

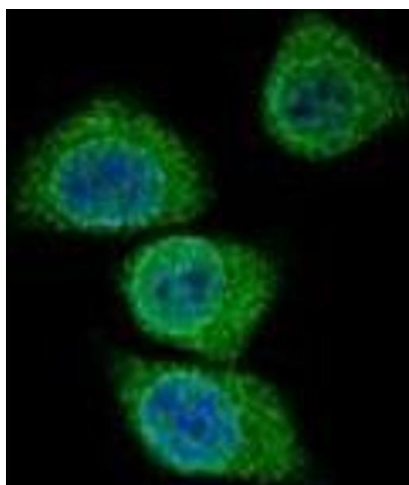
## Handling

Format:	Liquid
Concentration:	0.25 mg/mL
Buffer:	PBS containing 0.09 % (W/V) Sodium Azide as preservative
Preservative:	Sodium azide
Precaution of Use:	This product contains sodium azide: a POISONOUS AND HAZARDOUS SUBSTANCE which should be handled by trained staff only.
Handling Advice:	Avoid repeated freezing and thawing.
Storage:	4 °C/-20 °C
Storage Comment:	Store undiluted at 2-8 °C for one month or (in aliquots) at -20 °C for longer.



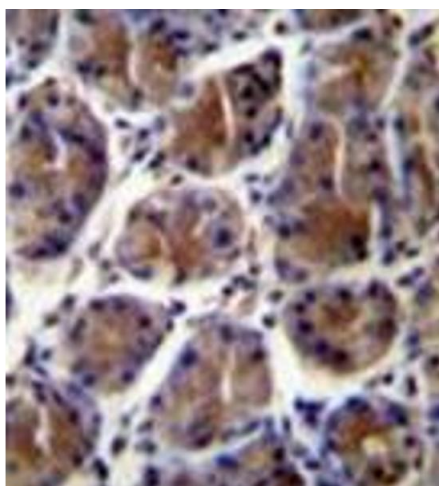
### Flow Cytometry

**Image 1.** Flow cytometric analysis of K562 cells using Intrinsic factor Antibody (Center) Cat.-No AP51837PU-N (right histogram) compared to a negative control cell (left histogram). FITC-conjugated goat-anti-rabbit secondary antibodies were used for the analysis.



### Immunofluorescence

**Image 2.** Confocal immunofluorescent analysis of Intrinsic factor Antibody (Center) Cat.-No AP51837PU-N with 293 cell followed by Alexa Fluor 488-conjugated goat anti-rabbit IgG (green). DAPI was used to stain the cell nuclear (blue).



### Immunohistochemistry (Paraffin-embedded Sections)

**Image 3.** Immunohistochemistry analysis in formalin fixed and paraffin embedded human stomach tissue reacted with Intrinsic factor Antibody (Center) followed by peroxidase conjugation of the secondary antibody and DAB staining.

Please check the [product details page](#) for more images. Overall 4 images are available for ABIN952930.