

Datasheet for ABIN952934  
**anti-ITPKC antibody (N-Term)**[Go to Product page](#)

## 3 Images

## Overview

Quantity:	0.4 mL
Target:	ITPKC
Binding Specificity:	AA 96-125, N-Term
Reactivity:	Human
Host:	Rabbit
Clonality:	Polyclonal
Conjugate:	This ITPKC antibody is un-conjugated
Application:	Western Blotting (WB), Flow Cytometry (FACS), Immunohistochemistry (Paraffin-embedded Sections) (IHC (p)), Enzyme Immunoassay (EIA)

## Product Details

Immunogen:	KLH conjugated synthetic peptide between 96~125 amino acids from the N-terminal region of human IP3 3-kinase C / ITPKC
Isotype:	Ig Fraction
Specificity:	This antibody recognizes Human IP3 3-kinase C / ITPKC (N-term).
Purification:	Protein A column, followed by peptide affinity purification

## Target Details

Target:	ITPKC
Alternative Name:	IP3 3-Kinase C / ITPKC ( <a href="#">ITPKC Products</a> )

## Target Details

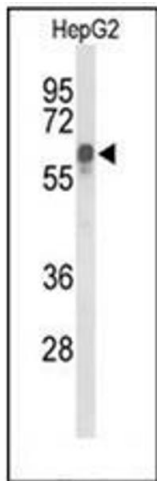
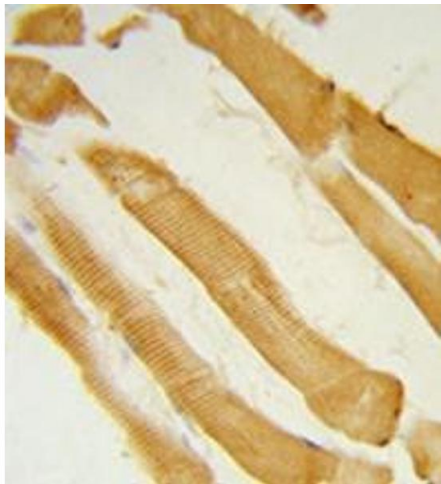
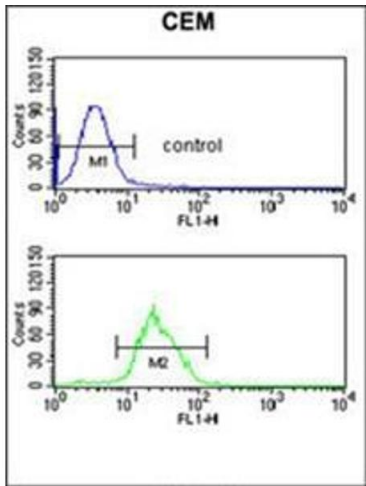
Background:	ITPKC encodes a member of the inositol 1,4,5-trisphosphate [Ins(1,4,5)P(3)] 3-kinase family of enzymes that catalyze the phosphorylation of inositol 1,4,5-trisphosphate to 1,3,4,5-tetrakisphosphate. The encoded protein is localized to the nucleus and cytoplasm and has both nuclear import and nuclear export activity. Single nucleotide polymorphisms in this gene are associated with Kawasaki disease.Synonyms: 4, 5-trisphosphate 3-kinase C, IP3K-C, IP3KC, Inositol 1, Inositol-trisphosphate 3-kinase C, InsP3-kinase C
Molecular Weight:	75207 Da
Gene ID:	80271
NCBI Accession:	<a href="#">NP_079470</a>

## Application Details

Application Notes:	Optimal working dilution should be determined by the investigator.
Restrictions:	For Research Use only

## Handling

Format:	Liquid
Concentration:	0.25 mg/mL
Buffer:	PBS containing 0.09 % (W/V) Sodium Azide as preservative
Preservative:	Sodium azide
Precaution of Use:	This product contains sodium azide: a POISONOUS AND HAZARDOUS SUBSTANCE which should be handled by trained staff only.
Handling Advice:	Avoid repeated freezing and thawing.
Storage:	4 °C/-20 °C
Storage Comment:	Store undiluted at 2-8 °C for one month or (in aliquots) at -20 °C for longer.



### Flow Cytometry

**Image 1.** Flow cytometric analysis of CEM cells using ITPKC Antibody (N-term) Cat.-No AP52258PU-N (bottom histogram) compared to a negative control cell (top histogram). FITC-conjugated goat-anti-rabbit secondary antibodies were used for the analysis.

### Immunohistochemistry (Paraffin-embedded Sections)

**Image 2.** Formalin-fixed and paraffin-embedded human skeletal muscle reacted with ITPKC Antibody (N-term) followed which was peroxidase-conjugated to the secondary antibody, followed by DAB staining.

### Western Blotting

**Image 3.** Western blot analysis of ITPKC Antibody (N-term) in HepG2 cell line lysates (35ug/lane). ITPKC (arrow) was detected using the purified Pab.