



Datasheet for ABIN952935
anti-ICEF1 antibody (C-Term)



[Go to Product page](#)

2 Images

Overview

Quantity:	0.4 mL
Target:	ICEF1 (IPCEF1)
Binding Specificity:	AA 316-345, C-Term
Reactivity:	Human
Host:	Rabbit
Clonality:	Polyclonal
Conjugate:	This ICEF1 antibody is un-conjugated
Application:	Western Blotting (WB), Flow Cytometry (FACS), Enzyme Immunoassay (EIA)

Product Details

Immunogen:	KLH conjugated synthetic peptide between 316-345 amino acids from the C-terminal region of human IPCEF1 / PIP3-E Genename: IPCEF1
Isotype:	Ig Fraction
Specificity:	This antibody recognizes Human IPCEF1 / PIP3-E (C-term).
Purification:	Protein A column, followed by peptide affinity purification

Target Details

Target:	ICEF1 (IPCEF1)
Alternative Name:	IPCEF1 / PIP3-E (IPCEF1 Products)
Background:	Enhances the promotion of guanine-nucleotide exchange by PSCD2 on ARF6 in a

Target Details

concentration-dependent manner (By similarity).Synonyms: Interactor protein for cytohesin exchange factors 1, KIAA0403, Phosphoinositide-binding protein PIP3-E

Molecular Weight: 48993 Da

Gene ID: 26034

NCBI Accession: [NP_001124171](#)

Application Details

Application Notes: Optimal working dilution should be determined by the investigator.

Restrictions: For Research Use only

Handling

Format: Liquid

Concentration: 0.25 mg/mL

Buffer: PBS containing 0.09 % (W/V) Sodium Azide as preservative

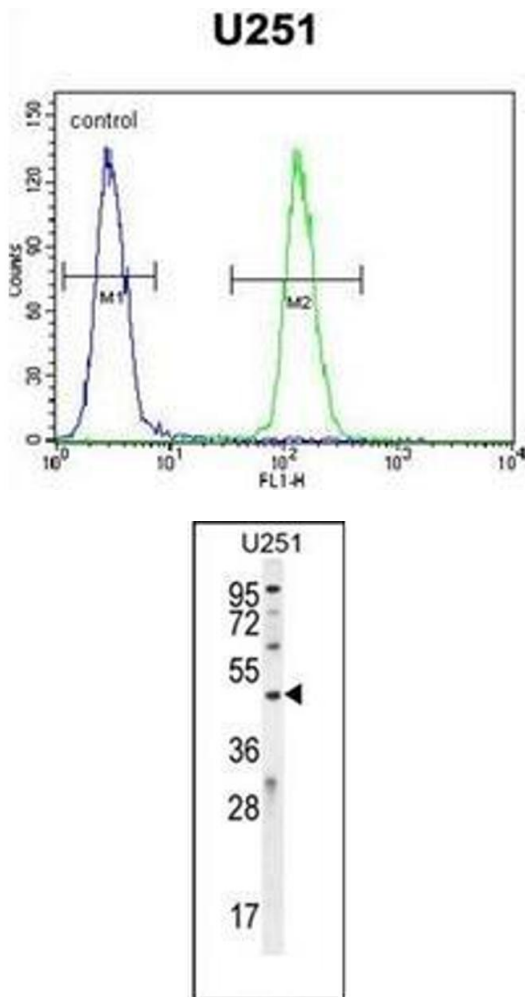
Preservative: Sodium azide

Precaution of Use: This product contains sodium azide: a POISONOUS AND HAZARDOUS SUBSTANCE which should be handled by trained staff only.

Handling Advice: Avoid repeated freezing and thawing.

Storage: 4 °C/-20 °C

Storage Comment: Store undiluted at 2-8 °C for one month or (in aliquots) at -20 °C for longer.



Flow Cytometry

Image 1. Flow cytometric analysis of U251 cells using IPCEF1 / PIP3-E Antibody (C-term) Cat.-No AP52142PU-N (right histogram) compared to a negative control cell (left histogram). FITC-conjugated goat-anti-rabbit secondary antibodies were used for the analysis.

Western Blotting

Image 2. Western blot analysis of IPCEF1 / PIP3-E Antibody (C-term) in U251 cell line lysates (35ug/lane). This demonstrates the ICEF1 antibody detected the ICEF1 protein (arrow).