

Datasheet for ABIN952937
anti-IQCA1 antibody (C-Term)[Go to Product page](#)

2 Images

Overview

Quantity:	0.4 mL
Target:	IQCA1
Binding Specificity:	AA 791-822, C-Term
Reactivity:	Human
Host:	Rabbit
Clonality:	Polyclonal
Conjugate:	This IQCA1 antibody is un-conjugated
Application:	Western Blotting (WB), Immunohistochemistry (Paraffin-embedded Sections) (IHC (p)), Enzyme Immunoassay (EIA)

Product Details

Immunogen:	KLH conjugated synthetic peptide between 791-822 amino acids from the C-terminal region of Human IQCA1
Isotype:	Ig Fraction
Specificity:	This antibody recognizes Human IQCA1 (C-term).
Purification:	Protein A column, followed by peptide affinity purification

Target Details

Target:	IQCA1
Alternative Name:	IQCA (IQCA1 Products)

Target Details

Background:	Synonyms: IQ and AAA domain-containing protein
Molecular Weight:	95341 Da
Gene ID:	79781
NCBI Accession:	NP_079002

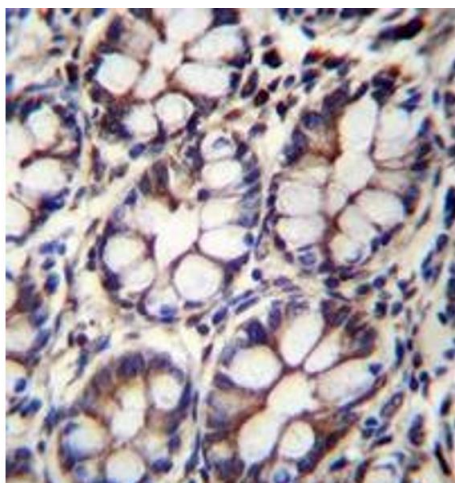
Application Details

Application Notes:	Optimal working dilution should be determined by the investigator.
Restrictions:	For Research Use only

Handling

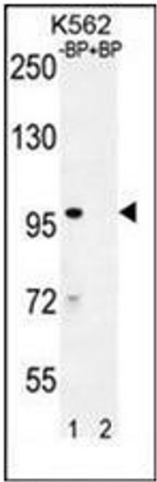
Format:	Liquid
Concentration:	0.25 mg/mL
Buffer:	PBS containing 0.09 % (W/V) Sodium Azide as preservative
Preservative:	Sodium azide
Precaution of Use:	This product contains sodium azide: a POISONOUS AND HAZARDOUS SUBSTANCE which should be handled by trained staff only.
Handling Advice:	Avoid repeated freezing and thawing.
Storage:	4 °C/-20 °C
Storage Comment:	Store undiluted at 2-8 °C for one month or (in aliquots) at -20 °C for longer.

Images



Immunohistochemistry (Paraffin-embedded Sections)

Image 1. Immunohistochemistry analysis in formalin fixed and paraffin embedded human rectum tissue reacted with AP52225PU-N followed by peroxidase conjugation of the secondary antibody and DAB staining.



Western Blotting

Image 2. Western blot analysis of IQCA1 Antibody (C-term) Cat.-No AP52225PU-N pre-incubated without (lane 1) and with (lane 2) blocking peptide in K562 cell line lysate. IQCA1 Antibody (C-term) (arrow) was detected using the purified Pab (1:60/250 dilution).