

## Datasheet for ABIN952942 anti-IQCJ antibody (C-Term)



[Go to Product page](#)

### 4 Images

#### Overview

|                      |   |
|----------------------|---|
| Quantity:            | 0.4 mL  |
| Target:              | IQCJ  |
| Binding Specificity: | AA 101-130, C-Term  |
| Reactivity:          | Human, Mouse  |
| Host:                | Rabbit  |
| Clonality:           | Polyclonal  |
| Conjugate:           | This IQCJ antibody is un-conjugated   |
| Application:         | Western Blotting (WB), Flow Cytometry (FACS), Immunohistochemistry (Paraffin-embedded Sections) (IHC (p)), Enzyme Immunoassay (EIA) |

#### Product Details

|               |  |
|---------------|--|
| Immunogen:    | KLH conjugated synthetic peptide between 101-130 amino acids from the C-terminal region of human IQCJ. |
| Isotype:      | Ig Fraction  |
| Specificity:  | This antibody recognizes Human and Mouse IQCJ (C-term).  |
| Purification: | Protein A column, followed by peptide affinity purification  |

#### Target Details

|                   |  |
|-------------------|--|
| Target:           | IQCJ                                   |
| Alternative Name: | IQCJ ( <a href="#">IQCJ Products</a> ) |

## Target Details

|                   |  |
|-------------------|--|
| Background:       | Synonyms: IQ domain-containing protein J |
| Molecular Weight: | 18226 Da                                 |
| Gene ID:          | 654502                                   |
| NCBI Accession:   | <a href="#">NP_001036170</a>             |

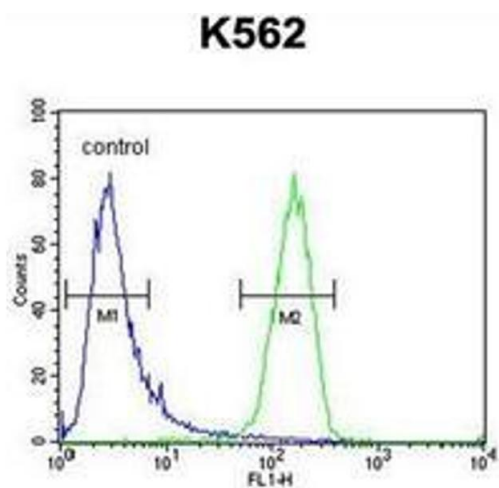
## Application Details

|                    |  |
|--------------------|--|
| Application Notes: | Optimal working dilution should be determined by the investigator. |
| Restrictions:      | For Research Use only  |

## Handling

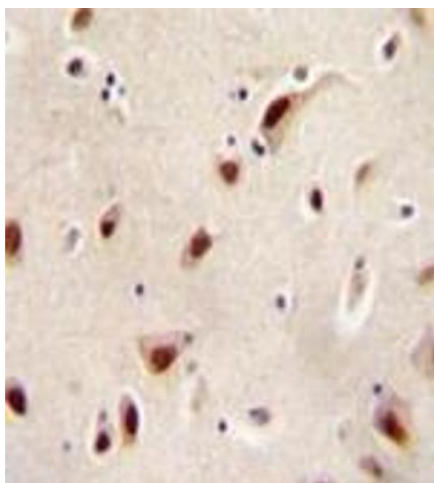
|                    |  |
|--------------------|--|
| Format:            | Liquid   |
| Concentration:     | 0.25 mg/mL   |
| Buffer:            | PBS containing 0.09 % (W/V) Sodium Azide as preservative   |
| Preservative:      | Sodium azide   |
| Precaution of Use: | This product contains sodium azide: a POISONOUS AND HAZARDOUS SUBSTANCE which should be handled by trained staff only. |
| Handling Advice:   | Avoid repeated freezing and thawing.   |
| Storage:           | 4 °C/-20 °C  |
| Storage Comment:   | Store undiluted at 2-8 °C for one month or (in aliquots) at -20 °C for longer.   |

## Images



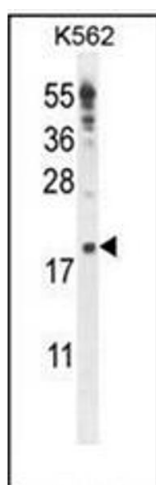
### Flow Cytometry

**Image 1.** Flow cytometric analysis of K562 cells using IQCJ Antibody (C-term) Cat.-No AP52230PU-N (right histogram) compared to a negative control cell (left histogram). FITC-conjugated goat-anti-rabbit secondary antibodies were used for the analysis.



#### Immunohistochemistry (Paraffin-embedded Sections)

**Image 2.** Immunohistochemistry analysis in formalin fixed and paraffin embedded human brain tissue reacted with IQCJ Antibody (C-term) followed by peroxidase conjugation of the secondary antibody and DAB staining.



#### Western Blotting

**Image 3.** Western blot analysis of IQCJ Antibody (C-term) in K562 cell line lysates (35ug/lane). This demonstrates the IQCJ antibody detected the IQCJ protein (arrow).

Please check the [product details page](#) for more images. Overall 4 images are available for ABIN952942.