

Datasheet for ABIN952957
anti-ISCA2 antibody (Middle Region)

2 Images

[Go to Product page](#)

Overview

Quantity:	0.4 mL
Target:	ISCA2
Binding Specificity:	AA 79-109, Middle Region
Reactivity:	Human, Mouse
Host:	Rabbit
Clonality:	Polyclonal
Conjugate:	This ISCA2 antibody is un-conjugated
Application:	Western Blotting (WB), Immunohistochemistry (Paraffin-embedded Sections) (IHC (p)), Enzyme Immunoassay (EIA)

Product Details

Immunogen:	KLH conjugated synthetic peptide between 79-109 amino acids from the Central region of human ISCA2 / HBLD1
Isotype:	Ig Fraction
Specificity:	This antibody recognizes Human and Mouse ISCA2 / HBLD1 (Center).
Purification:	Protein A column, followed by peptide affinity purification

Target Details

Target:	ISCA2
Alternative Name:	ISCA2 / HBLD1 (ISCA2 Products)

Target Details

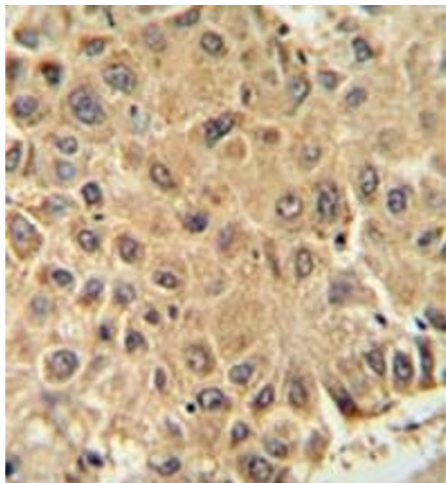
Background:	ISCA2 is involved in the assembly of mitochondrial iron-sulfur proteins. Probably involved in the binding of an intermediate of Fe/S cluster assembly (By similarity).Synonyms: HESB-like domain-containing protein 1, Iron-sulfur cluster assembly 2 homolog
Molecular Weight:	16476 Da
Gene ID:	122961
NCBI Accession:	NP_919255

Application Details

Application Notes:	Optimal working dilution should be determined by the investigator.
Restrictions:	For Research Use only

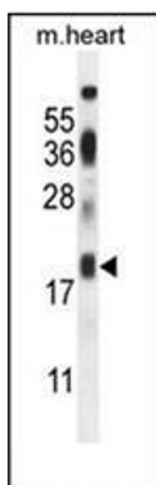
Handling

Format:	Liquid
Concentration:	0.25 mg/mL
Buffer:	PBS containing 0.09 % (W/V) Sodium Azide as preservative
Preservative:	Sodium azide
Precaution of Use:	This product contains sodium azide: a POISONOUS AND HAZARDOUS SUBSTANCE which should be handled by trained staff only.
Handling Advice:	Avoid repeated freezing and thawing.
Storage:	4 °C/-20 °C
Storage Comment:	Store undiluted at 2-8 °C for one month or (in aliquots) at -20 °C for longer.



Immunohistochemistry (Paraffin-embedded Sections)

Image 1. Immunohistochemistry analysis in formalin fixed and paraffin embedded human prostate carcinoma reacted with ISCA2 / HBLD1 Antibody (Center) followed which was peroxidase conjugated to the secondary antibody and followed by DAB staining.



Western Blotting

Image 2. Western blot analysis of ISCA2 / HBLD1 Antibody (Center) in mouse heart tissue lysates (35ug/lane).