

Datasheet for ABIN952963
anti-ITIH1 antibody (Middle Region)

2 Images

[Go to Product page](#)

Overview

Quantity:	0.4 mL
Target:	ITIH1
Binding Specificity:	AA 613-643, Middle Region
Reactivity:	Human
Host:	Rabbit
Clonality:	Polyclonal
Conjugate:	This ITIH1 antibody is un-conjugated
Application:	Western Blotting (WB), Flow Cytometry (FACS), Enzyme Immunoassay (EIA)

Product Details

Immunogen:	KLH conjugated synthetic peptide between 613-643 amino acids from the Central region of Human ITIH1 / IGHEP1
Isotype:	Ig Fraction
Specificity:	This antibody recognizes Human ITIH1 / IGHEP1 (Center).
Purification:	Protein A column, followed by peptide affinity purification

Target Details

Target:	ITIH1
Alternative Name:	ITIH1 / IGHEP1 (ITIH1 Products)
Background:	The protein encoded by this gene is the heavy chain of a serine protease inhibitor that may

Target Details

serve to carry hyaluronan in plasma. This gene is part of a cluster of similar genes on chromosome 3. Multiple transcript variants encoding different isoforms have been found for this gene. Synonyms: ITI heavy chain H1, Inter-alpha-inhibitor heavy chain 1, Inter-alpha-trypsin inhibitor complex component III, Inter-alpha-trypsin inhibitor heavy chain H1, Serum-derived hyaluronan-associated protein

Molecular Weight: 101389 Da

Gene ID: 3697

NCBI Accession: [NP_001159906](#)

Pathways: [Glycosaminoglycan Metabolic Process](#)

Application Details

Application Notes: Optimal working dilution should be determined by the investigator.

Restrictions: For Research Use only

Handling

Format: Liquid

Concentration: 0.25 mg/mL

Buffer: PBS containing 0.09 % (W/V) Sodium Azide as preservative

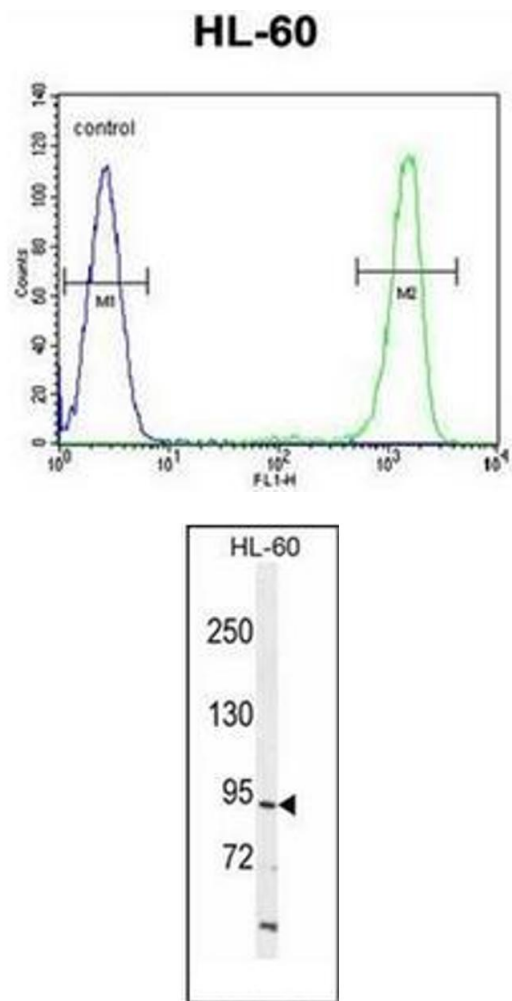
Preservative: Sodium azide

Precaution of Use: This product contains sodium azide: a POISONOUS AND HAZARDOUS SUBSTANCE which should be handled by trained staff only.

Handling Advice: Avoid repeated freezing and thawing.

Storage: 4 °C/-20 °C

Storage Comment: Store undiluted at 2-8 °C for one month or (in aliquots) at -20 °C for longer.



Flow Cytometry

Image 1. Flow cytometric analysis of HL-60 cells using ITIH1 / IGHEP1 Antibody (Center) Cat.-No AP52255PU-N (right histogram) compared to a negative control cell (left histogram). FITC-conjugated goat-anti-rabbit secondary antibodies were used for the analysis.

Western Blotting

Image 2. Western blot analysis of ITIH1 / IGHEP1 Antibody (Center) in HL-60 cell line lysates (35ug/lane). This demonstrates the ITIH1 antibody detected the ITIH1 protein (arrow).