

Datasheet for ABIN952968
anti-KDM5A antibody (C-Term)[Go to Product page](#)

2 Images

Overview

Quantity:	0.4 mL
Target:	KDM5A
Binding Specificity:	AA 1608-1641, C-Term
Reactivity:	Human
Host:	Rabbit
Clonality:	Polyclonal
Conjugate:	This KDM5A antibody is un-conjugated
Application:	Western Blotting (WB), Immunohistochemistry (Paraffin-embedded Sections) (IHC (p)), Enzyme Immunoassay (EIA)

Product Details

Immunogen:	KLH conjugated synthetic peptide between 1608-1641 amino acids from the C-terminal region of Human JARID1A Genename: KDM5A
Isotype:	Ig Fraction
Specificity:	This antibody recognizes Human JARID1A (C-term).
Purification:	Protein A column, followed by peptide affinity purification

Target Details

Target:	KDM5A
Alternative Name:	JARID1A (KDM5A Products)

Target Details

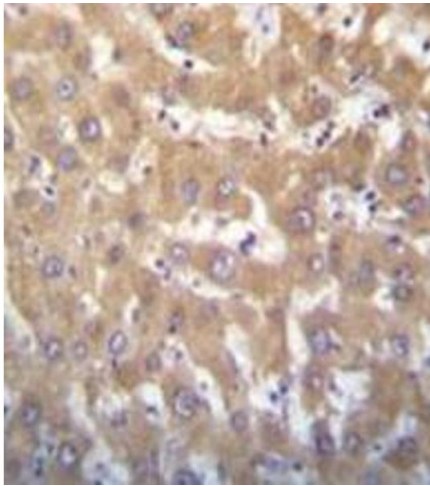
Background:	The protein encoded by this gene is a ubiquitously expressed nuclear protein. It binds directly, with several other proteins, to retinoblastoma protein which regulates cell proliferation. This protein also interacts with rhombotin-2 which functions distinctly in erythropoiesis and in T-cell leukemogenesis. Rhombotin-2 is thought to either directly affect the activity of the encoded protein or may indirectly modulate the functions of the retinoblastoma protein by binding to this protein.Synonyms: KDM5A
Molecular Weight:	186,838 Da
Gene ID:	5927
NCBI Accession:	NP_005047
Pathways:	Chromatin Binding , Warburg Effect

Application Details

Application Notes:	Optimal working dilution should be determined by the investigator.
Restrictions:	For Research Use only

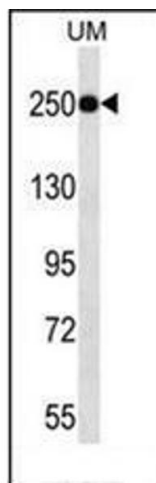
Handling

Format:	Liquid
Concentration:	0.25 mg/mL
Buffer:	PBS containing 0.09 % (W/V) Sodium Azide as preservative
Preservative:	Sodium azide
Precaution of Use:	This product contains sodium azide: a POISONOUS AND HAZARDOUS SUBSTANCE which should be handled by trained staff only.
Handling Advice:	Avoid repeated freezing and thawing.
Storage:	4 °C/-20 °C
Storage Comment:	Store undiluted at 2-8 °C for one month or (in aliquots) at -20 °C for longer.



Immunohistochemistry (Paraffin-embedded Sections)

Image 1. Immunohistochemistry analysis in formalin fixed and paraffin embedded human liver tissue reacted with JARID1A Antibody (C-term) followed which was peroxidase conjugated to the secondary antibody and followed by DAB staining.



Western Blotting

Image 2. Western blot analysis of JARID1A Antibody (C-term) in UM cell line lysates (35ug/lane). This demonstrates the JARID1A antibody detected the JARID1A protein (arrow).