



[Go to Product page](#)

Datasheet for ABIN952971

anti-KDM3B antibody (C-Term)

2 Images

Overview

Quantity:	0.4 mL
Target:	KDM3B
Binding Specificity:	AA 1335-1358, C-Term
Reactivity:	Human, Mouse
Host:	Rabbit
Clonality:	Polyclonal
Conjugate:	This KDM3B antibody is un-conjugated
Application:	Western Blotting (WB), Flow Cytometry (FACS), Enzyme Immunoassay (EIA)

Product Details

Immunogen:	KLH conjugated synthetic peptide between 1335-1358 amino acids from the C-terminal region of human JMJD1B Genename: KDM3B
Isotype:	Ig Fraction
Specificity:	This antibody recognizes Human and Mouse JMJD1B / KDM3B (C-term).
Purification:	Saturated Ammonium Sulfate (SAS) precipitation followed by dialysis against PBS

Target Details

Target:	KDM3B
Alternative Name:	JMJD1B / KDM3B (KDM3B Products)
Background:	Histone demethylase that specifically demethylates 'Lys-9' of histone H3, thereby playing a

Target Details

central role in histone code. Demethylation of Lys residue generates formaldehyde and succinate. May have tumor suppressor activity. Synonyms: 5qNCA, C5orf7, JHDM2B, JmjC domain-containing histone demethylation protein 2B, Jumonji domain-containing protein 1B, KIAA1082, Lysine-specific demethylase 3B, Nuclear protein 5qNCA

Molecular Weight: 191,581 Da

Gene ID: 51780

NCBI Accession: [NP_057688](#)

Pathways: [Warburg Effect](#)

Application Details

Application Notes: Optimal working dilution should be determined by the investigator.

Restrictions: For Research Use only

Handling

Format: Liquid

Concentration: 0.25 mg/mL

Buffer: PBS containing 0.09 % (W/V) Sodium Azide as preservative

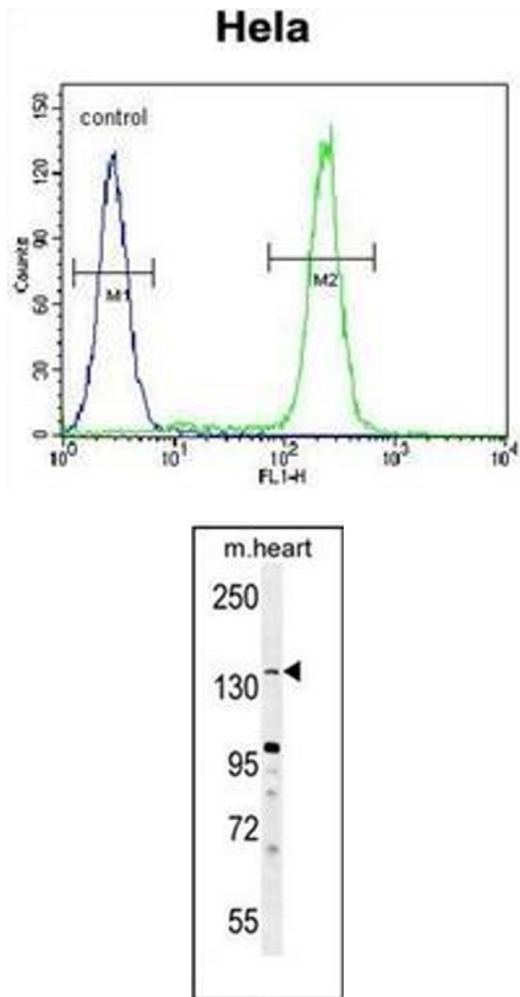
Preservative: Sodium azide

Precaution of Use: This product contains sodium azide: a POISONOUS AND HAZARDOUS SUBSTANCE which should be handled by trained staff only.

Handling Advice: Avoid repeated freezing and thawing.

Storage: 4 °C/-20 °C

Storage Comment: Store undiluted at 2-8 °C for one month or (in aliquots) at -20 °C for longer.



Flow Cytometry

Image 1. Flow cytometric analysis of Hela cells using JHDM2b Antibody (C-term) Cat.-No AP52267PU-N (right histogram) compared to a negative control cell (left histogram). FITC-conjugated goat-anti-rabbit secondary antibodies were used for the analysis.

Western Blotting

Image 2. Western blot analysis of JHDM2b Antibody (C-term) in mouse heart tissue lysates (35ug/lane). This demonstrates the JHDM2b antibody detected the JHDM2b protein (arrow).