

Datasheet for ABIN952973

anti-KDM4B antibody (N-Term)

3 Images

1 Publication

[Go to Product page](#)

Overview

Quantity:	0.4 mL
Target:	KDM4B
Binding Specificity:	AA 10-40, N-Term
Reactivity:	Human
Host:	Rabbit
Clonality:	Polyclonal
Conjugate:	This KDM4B antibody is un-conjugated
Application:	Western Blotting (WB), Flow Cytometry (FACS), Immunohistochemistry (Paraffin-embedded Sections) (IHC (p)), Enzyme Immunoassay (EIA)

Product Details

Immunogen:	KLH conjugated synthetic peptide between 10~40 amino acids from the N-terminal region of human JMJD2B Genename: KDM4B
Isotype:	Ig Fraction
Specificity:	This antibody recognizes Human JMJD2B / KDM4B (N-term).
Purification:	Protein A column, followed by peptide affinity purification

Target Details

Target:	KDM4B
Alternative Name:	JMJD2B / KDM4B (KDM4B Products)

Target Details

Background:	KDM4B / JMJD2B is a jumonji domain containing histone demethylase that specifically demethylates histone H3 at K9 and K36 Synonyms: JHDM3B, JmjC domain-containing histone demethylation protein 3B, Jumonji domain-containing protein 2B, KIAA0876, Lysine-specific demethylase 4B
Molecular Weight:	121897 Da
Gene ID:	23030
NCBI Accession:	NP_055830
Pathways:	Warburg Effect

Application Details

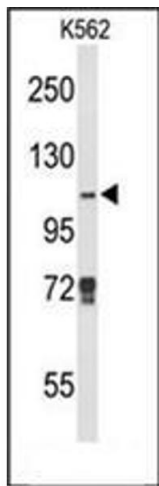
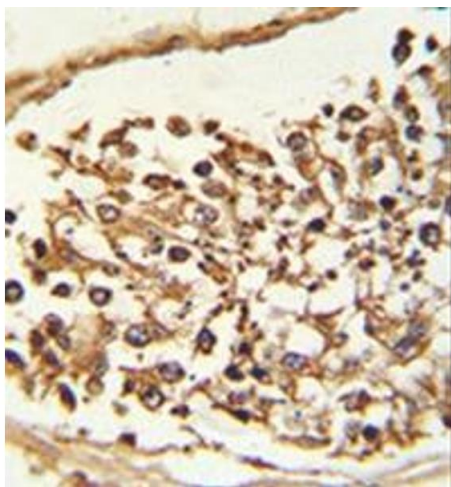
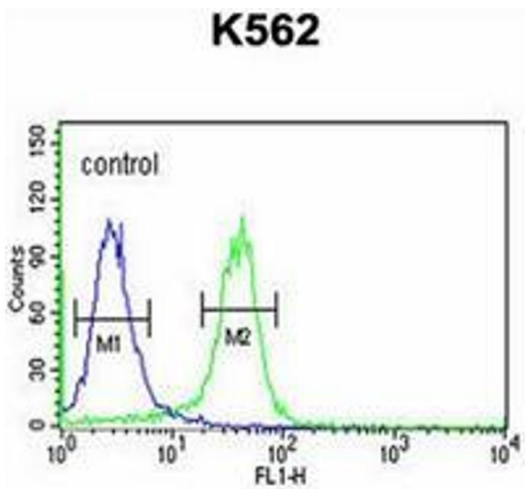
Application Notes:	Optimal working dilution should be determined by the investigator.
Restrictions:	For Research Use only

Handling

Format:	Liquid
Concentration:	0.25 mg/mL
Buffer:	PBS containing 0.09 % (W/V) Sodium Azide as preservative
Preservative:	Sodium azide
Precaution of Use:	This product contains sodium azide: a POISONOUS AND HAZARDOUS SUBSTANCE which should be handled by trained staff only.
Handling Advice:	Avoid repeated freezing and thawing.
Storage:	4 °C/-20 °C
Storage Comment:	Store undiluted at 2-8 °C for one month or (in aliquots) at -20 °C for longer.

Publications

Product cited in:	Dephoure, Zhou, Villén, Beausoleil, Bakalarski, Elledge, Gygi: "A quantitative atlas of mitotic phosphorylation." in: Proceedings of the National Academy of Sciences of the United States of America , Vol. 105, Issue 31, pp. 10762-7, (2008) (PubMed).
-------------------	--



Flow Cytometry

Image 1. Flow cytometric analysis of K562 cells using JMJD2B Antibody (N-term) Cat.-No AP52269PU-N (right histogram) compared to a negative control cell (left histogram). FITC-conjugated goat-anti-rabbit secondary antibodies were used for the analysis.

Immunohistochemistry (Paraffin-embedded Sections)

Image 2. Formalin-fixed and paraffin-embedded human Testis tissue reacted with JMJD2B Antibody (N-term) followed which was peroxidase-conjugated to the secondary antibody, followed by DAB staining.

Western Blotting

Image 3. Western blot analysis of JMJD2B Antibody (N-term) in K562 cell line lysates (35ug/lane). JMJD2B (arrow) was detected using the purified Pab.