



[Go to Product page](#)

Datasheet for ABIN952976

## anti-KDM4C antibody (C-Term)

### 2 Images

#### Overview

Quantity:	0.4 mL
Target:	KDM4C
Binding Specificity:	AA 1030-1056, C-Term
Reactivity:	Human
Host:	Rabbit
Clonality:	Polyclonal
Conjugate:	This KDM4C antibody is un-conjugated
Application:	Western Blotting (WB), Flow Cytometry (FACS), Enzyme Immunoassay (EIA)

#### Product Details

Immunogen:	KLH conjugated synthetic peptide between 1030-1056 amino acids from the C-terminal region of human JMJD2C Genename: KDM4C
Isotype:	Ig Fraction
Specificity:	This antibody recognizes Human JMJD2C / KDM4C (C-term).
Purification:	Protein A column, followed by peptide affinity purification

#### Target Details

Target:	KDM4C
Alternative Name:	JMJD2C / KDM4C ( <a href="#">KDM4C Products</a> )
Background:	This gene is a member of the Jumonji domain 2 (JMJD2) family and encodes a protein with

## Target Details

---

one JmjC domain, one JmjN domain, two PHD-type zinc fingers, and two Tudor domains. This nuclear protein functions as a trimethylation-specific demethylase, converting specific trimethylated histone residues to the dimethylated form. Chromosomal aberrations and increased transcriptional expression of this gene are associated with esophageal squamous cell carcinoma. Alternative splicing results in multiple transcript variants. Synonyms: GASC-1 protein, GASC1, Gene amplified in squamous cell carcinoma 1 protein, JHDM3C, JmjC domain-containing histone demethylation protein 3C, Jumonji domain-containing protein 2C, KIAA0780, Lysine-specific demethylase 4C

---

Molecular Weight: 119982 Da

---

Gene ID: 23081

---

NCBI Accession: [NP\\_001140166](#)

---

Pathways: [Nuclear Hormone Receptor Binding](#), [Warburg Effect](#)

## Application Details

---

---

Application Notes: Optimal working dilution should be determined by the investigator.

---

Restrictions: For Research Use only

## Handling

---

---

Format: Liquid

---

Concentration: 0.25 mg/mL

---

Buffer: PBS containing 0.09 % (W/V) Sodium Azide as preservative

---

Preservative: Sodium azide

---

Precaution of Use: This product contains sodium azide: a POISONOUS AND HAZARDOUS SUBSTANCE which should be handled by trained staff only.

---

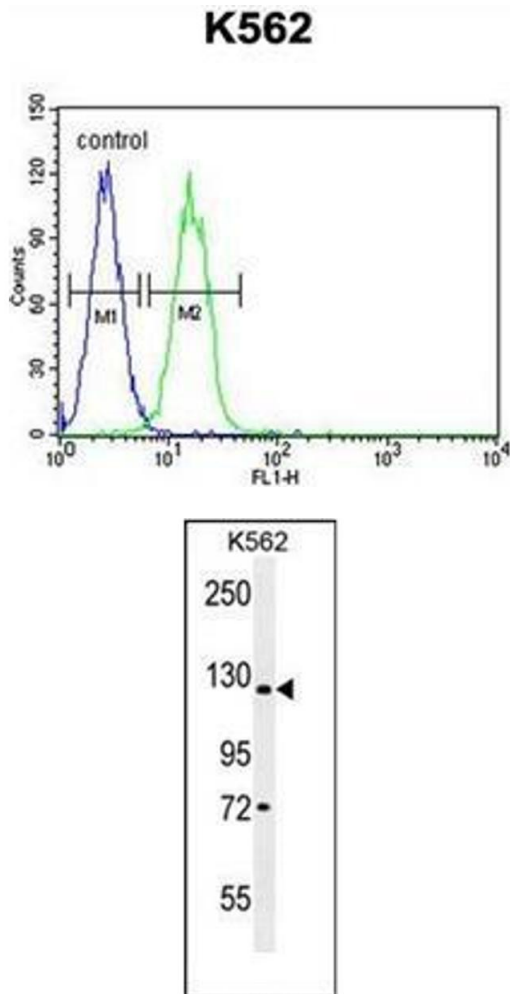
Handling Advice: Avoid repeated freezing and thawing.

---

Storage: 4 °C/-20 °C

---

Storage Comment: Store undiluted at 2-8 °C for one month or (in aliquots) at -20 °C for longer.



### Flow Cytometry

**Image 1.** Flow cytometric analysis of K562 cells using JMJD2C Antibody (C-term) Cat.-No AP52272PU-N (right histogram) compared to a negative control cell (left histogram). FITC-conjugated goat-anti-rabbit secondary antibodies were used for the analysis.

### Western Blotting

**Image 2.** Western blot analysis of JMJD2C Antibody (C-term) in K562 cell line lysates (35ug/lane). This demonstrates the JMJD2C antibody detected the JMJD2C protein (arrow).