

Datasheet for ABIN952980  
**anti-Keratin 78 antibody (Middle Region)**



[Go to Product page](#)

2 Images

Overview

Quantity:	0.4 mL
Target:	Keratin 78 (KRT78)
Binding Specificity:	AA 182-212, Middle Region
Reactivity:	Human
Host:	Rabbit
Clonality:	Polyclonal
Conjugate:	This Keratin 78 antibody is un-conjugated
Application:	Western Blotting (WB), Flow Cytometry (FACS), Enzyme Immunoassay (EIA)

Product Details

Immunogen:	KLH conjugated synthetic peptide between 182~212 amino acids from the Central region of human K2C78
Isotype:	Ig Fraction
Specificity:	This antibody recognizes Human K2C78 (Center).
Purification:	Protein A column, followed by peptide affinity purification

Target Details

Target:	Keratin 78 (KRT78)
Abstract:	<a href="#">KRT78 Products</a>
Background:	This gene is a member of the type II keratin gene family and encodes a protein with an

## Target Details

---

intermediate filament domain. Keratins are the major structural proteins in epithelial cells, forming a cytoplasmic network of 10 to 12 nm wide intermediate filaments and creating a scaffold that gives cells the ability to withstand mechanical and non-mechanical stresses. The genes of the type II keratin family are located as a gene cluster at 12p13.13. Four pseudogenes of this gene family have been identified. Synonyms: CK-78, Cytokeratin-78, K5B, K78, KB40, KRT78, Keratin, Keratin-5b, Keratin-78, Type-II keratin Kb40, type II cytoskeletal 78

Molecular Weight: 56866 Da

Gene ID: 196374

NCBI Accession: [NP\\_775487](#)

## Application Details

---

Application Notes: Optimal working dilution should be determined by the investigator.

Restrictions: For Research Use only

## Handling

---

Format: Liquid

Concentration: 0.25 mg/mL

Buffer: PBS containing 0.09 % (W/V) Sodium Azide as preservative

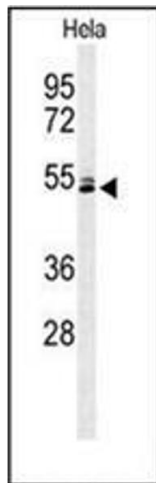
Preservative: Sodium azide

Precaution of Use: This product contains sodium azide: a POISONOUS AND HAZARDOUS SUBSTANCE which should be handled by trained staff only.

Handling Advice: Avoid repeated freezing and thawing.

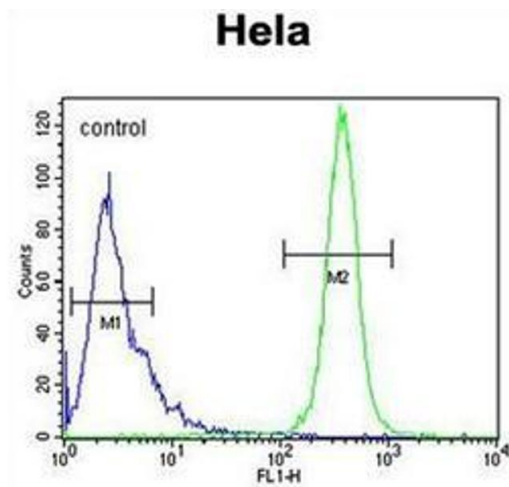
Storage: 4 °C/-20 °C

Storage Comment: Store undiluted at 2-8 °C for one month or (in aliquots) at -20 °C for longer.



### Western Blotting

**Image 1.** Western blot analysis of K2C78 Antibody (Center) in HeLa cell line lysates (35ug/lane). K2C78 (arrow) was detected using the purified Pab.



### Flow Cytometry

**Image 2.** Flow cytometric analysis of HeLa cells using K2C78 Antibody (Center) Cat.-No AP52287PU-N (right histogram) compared to a negative control cell (left histogram). FITC-conjugated goat-anti-rabbit secondary antibodies were used for the analysis.