

Datasheet for ABIN952987
anti-KAT2A antibody (C-Term)[Go to Product page](#)

2 Images

Overview

Quantity:	0.4 mL
Target:	KAT2A
Binding Specificity:	AA 806-837, C-Term
Reactivity:	Human, Mouse
Host:	Rabbit
Clonality:	Polyclonal
Conjugate:	This KAT2A antibody is un-conjugated
Application:	Western Blotting (WB), Flow Cytometry (FACS), Enzyme Immunoassay (EIA)

Product Details

Immunogen:	KLH conjugated synthetic peptide between 806-837 amino acids from the C-terminal region of Human KAT2A / GCN5L2
Isotype:	Ig Fraction
Specificity:	This antibody recognizes Human and Mouse KAT2A / GCN5L2 (C-term).
Purification:	Saturated Ammonium Sulfate (SAS) precipitation followed by dialysis against PBS

Target Details

Target:	KAT2A
Alternative Name:	KAT2A / GCN5L2 (KAT2A Products)
Background:	KAT2A, or GCN5, is a histone acetyltransferase (HAT) that functions primarily as a

Target Details

transcriptional activator. It also functions as a repressor of NF-kappa-B (see MIM 164011) by promoting ubiquitination of the NF-kappa-B subunit RELA (MIM 164014) in a HAT-independent manner (Mao et al., 2009 [PubMed 19339690]). Synonyms: General control of amino acid synthesis protein 5-like 2, HGCN5, Histone acetyltransferase GCN5, Histone acetyltransferase KAT2A, HsGCN5, Lysine acetyltransferase 2A, STAF97

Molecular Weight: 93926 Da

Gene ID: 2648

NCBI Accession: [NP_066564](#)

Pathways: [Chromatin Binding](#), [Tube Formation](#)

Application Details

Application Notes: Optimal working dilution should be determined by the investigator.

Restrictions: For Research Use only

Handling

Format: Liquid

Concentration: 0.25 mg/mL

Buffer: PBS containing 0.09 % (W/V) Sodium Azide as preservative

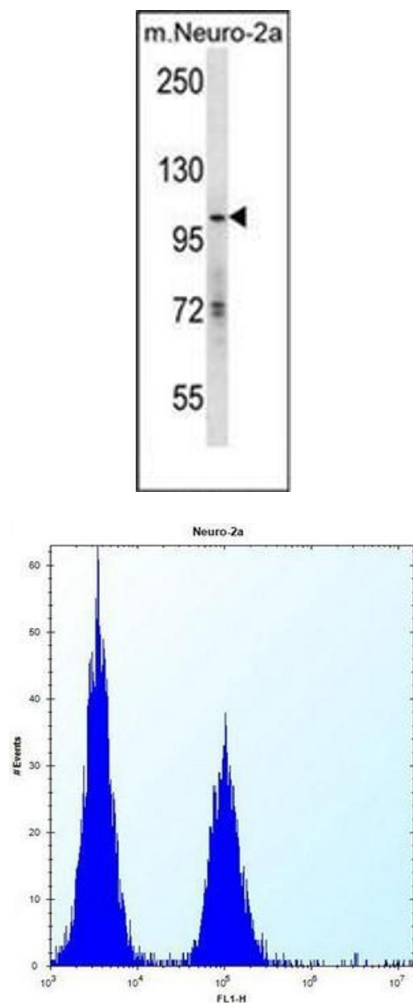
Preservative: Sodium azide

Precaution of Use: This product contains sodium azide: a POISONOUS AND HAZARDOUS SUBSTANCE which should be handled by trained staff only.

Handling Advice: Avoid repeated freezing and thawing.

Storage: 4 °C/-20 °C

Storage Comment: Store undiluted at 2-8 °C for one month or (in aliquots) at -20 °C for longer.



Western Blotting

Image 1. Western blot analysis of KAT2A / GCN5L2 Antibody (C-term) in mouse Neuro-2a cell line lysates (35ug/lane).

Flow Cytometry

Image 2. Flow cytometric analysis of Neuro-2a cells using KAT2A / GCN5L2 Antibody (C-term) Cat.-No AP52039PU-N (right histogram) compared to a negative control cell (left histogram). FITC-conjugated donkey-anti-rabbit secondary antibodies were used for the analysis.