



[Go to Product page](#)

Datasheet for ABIN952988

anti-KATNAL1 antibody (N-Term)

3 Images

Overview

Quantity:	0.4 mL
Target:	KATNAL1
Binding Specificity:	AA 144-174, N-Term
Reactivity:	Human
Host:	Rabbit
Clonality:	Polyclonal
Conjugate:	This KATNAL1 antibody is un-conjugated
Application:	Western Blotting (WB), Flow Cytometry (FACS), Immunohistochemistry (Paraffin-embedded Sections) (IHC (p)), Enzyme Immunoassay (EIA)

Product Details

Immunogen:	KLH conjugated synthetic peptide between 144-174 amino acids from the N-terminal region of human KATNAL1
Isotype:	Ig Fraction
Specificity:	This antibody recognizes Human KATNAL1 (N-term).
Purification:	Protein A column, followed by peptide affinity purification

Target Details

Target:	KATNAL1
Alternative Name:	KATNAL1 (KATNAL1 Products)

Target Details

Background:	Synonyms: Katanin p60 ATPase-containing subunit A-like 1, p60 katanin-like 1
Molecular Weight:	55392 Da
Gene ID:	84056
NCBI Accession:	NP_001014402

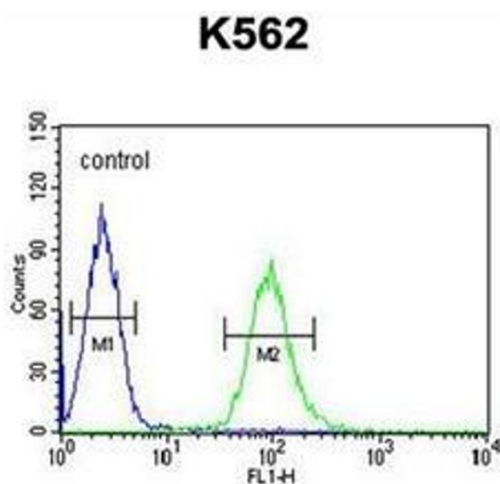
Application Details

Application Notes:	Optimal working dilution should be determined by the investigator.
Restrictions:	For Research Use only

Handling

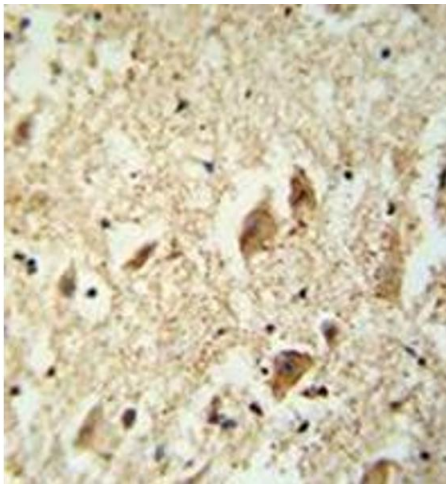
Format:	Liquid
Concentration:	0.25 mg/mL
Buffer:	PBS containing 0.09 % (W/V) Sodium Azide as preservative
Preservative:	Sodium azide
Precaution of Use:	This product contains sodium azide: a POISONOUS AND HAZARDOUS SUBSTANCE which should be handled by trained staff only.
Handling Advice:	Avoid repeated freezing and thawing.
Storage:	4 °C/-20 °C
Storage Comment:	Store undiluted at 2-8 °C for one month or (in aliquots) at -20 °C for longer.

Images



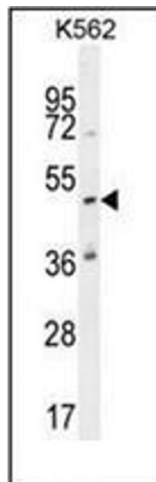
Flow Cytometry

Image 1. Flow cytometric analysis of K562 cells using KATNAL1 Antibody (N-term) Cat.-No AP52292PU-N (right histogram) compared to a negative control cell (left histogram). FITC-conjugated goat-anti-rabbit secondary antibodies were used for the analysis.



Immunohistochemistry (Paraffin-embedded Sections)

Image 2. Immunohistochemistry analysis in formalin fixed and paraffin embedded human brain tissue reacted with KATNAL1 Antibody (N-term) followed which was peroxidase conjugated to the secondary antibody and followed by DAB staining.



Western Blotting

Image 3. Western blot analysis of KATNAL1 Antibody (N-term) in K562 cell line lysates (35ug/lane). This demonstrates the KATL1 antibody detected the KATL1 protein (arrow).