

Datasheet for ABIN952991  
**anti-KBTBD5 antibody (Middle Region)**[Go to Product page](#)

## 3 Images

## Overview

Quantity:	0.4 mL
Target:	KBTBD5
Binding Specificity:	AA 356-384, Middle Region
Reactivity:	Human
Host:	Rabbit
Clonality:	Polyclonal
Conjugate:	This KBTBD5 antibody is un-conjugated
Application:	Western Blotting (WB), Flow Cytometry (FACS), Immunohistochemistry (Paraffin-embedded Sections) (IHC (p)), Enzyme Immunoassay (EIA)

## Product Details

Immunogen:	KLH conjugated synthetic peptide between 356-384 amino acids from the Central region of human KBTBD5
Isotype:	Ig Fraction
Specificity:	This antibody recognizes Human KBTBD5 / SRYP (Center).
Purification:	Protein A column, followed by peptide affinity purification

## Target Details

Target:	KBTBD5
Alternative Name:	KBTBD5 / SRYP ( <a href="#">KBTBD5 Products</a> )

## Target Details

Background:	Synonyms: Kelch repeat and BTB domain-containing protein 5, Sarcosynapsin
Molecular Weight:	69257 Da
Gene ID:	131377
NCBI Accession:	<a href="#">NP_689606</a>

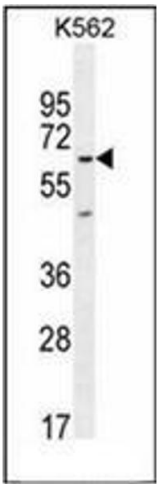
## Application Details

Application Notes:	Optimal working dilution should be determined by the investigator.
Restrictions:	For Research Use only

## Handling

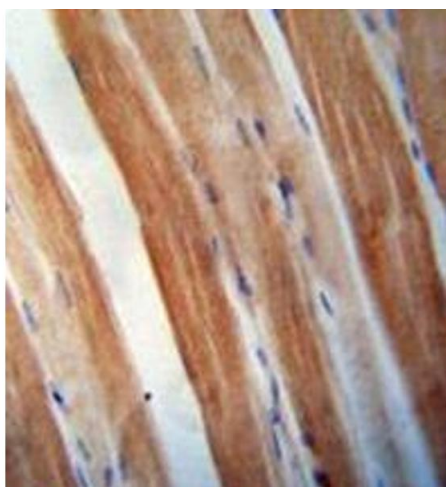
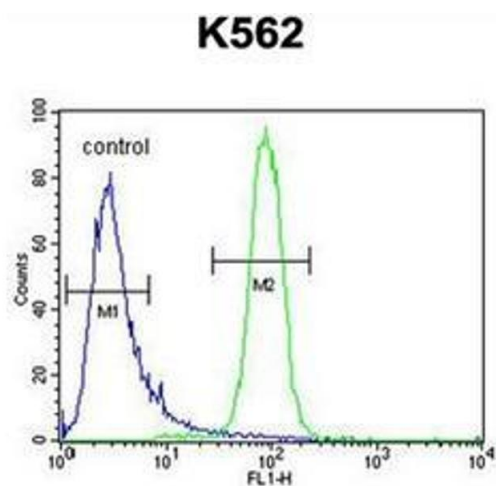
Format:	Liquid
Concentration:	0.25 mg/mL
Buffer:	PBS containing 0.09 % (W/V) Sodium Azide as preservative
Preservative:	Sodium azide
Precaution of Use:	This product contains sodium azide: a POISONOUS AND HAZARDOUS SUBSTANCE which should be handled by trained staff only.
Handling Advice:	Avoid repeated freezing and thawing.
Storage:	4 °C/-20 °C
Storage Comment:	Store undiluted at 2-8 °C for one month or (in aliquots) at -20 °C for longer.

## Images



### Western Blotting

**Image 1.** Western blot analysis of KBTBD5 Antibody (Center) in K562 cell line lysates (35ug/lane). This demonstrates the KBTBD5 antibody detected the KBTBD5 protein (arrow).



#### Flow Cytometry

**Image 2.** Flow cytometric analysis of K562 cells using KBTBD5 Antibody (Center) Cat.-No AP52295PU-N (right histogram) compared to a negative control cell (left histogram). FITC-conjugated goat-anti-rabbit secondary antibodies were used for the analysis.

#### Immunohistochemistry (Paraffin-embedded Sections)

**Image 3.** Immunohistochemistry analysis in formalin fixed and paraffin embedded human skeletal muscle reacted with KBTBD5 Antibody (Center) followed which was peroxidase conjugated to the secondary antibody and followed by DAB staining.