

Datasheet for ABIN952993  
**anti-KCNA1 antibody (Middle Region)**[Go to Product page](#)

## 2 Images

## Overview

Quantity:	0.4 mL
Target:	KCNA1
Binding Specificity:	AA 171-201, Middle Region
Reactivity:	Human
Host:	Rabbit
Clonality:	Polyclonal
Conjugate:	This KCNA1 antibody is un-conjugated
Application:	Western Blotting (WB), Immunohistochemistry (Paraffin-embedded Sections) (IHC (p)), Enzyme Immunoassay (EIA)

## Product Details

Immunogen:	KLH conjugated synthetic peptide between 171-201 amino acids from the Central region of human KCNA1
Isotype:	Ig Fraction
Specificity:	This antibody recognizes Human KCNA1 (Center).
Purification:	Protein A column, followed by peptide affinity purification

## Target Details

Target:	KCNA1
Alternative Name:	KCNA1 ( <a href="#">KCNA1 Products</a> )

## Target Details

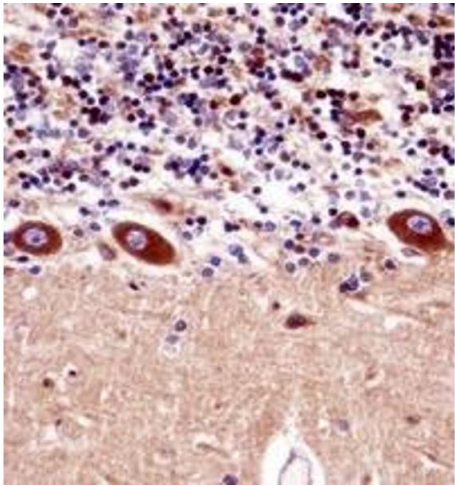
Background:	This gene encodes a voltage-gated delayed potassium channel that is phylogenetically related to the Drosophila Shaker channel. The encoded protein has six putative transmembrane segments (S1-S6), and the loop between S5 and S6 forms the pore and contains the conserved selectivity filter motif (GYGD). The functional channel is a homotetramer. The N-terminus of the channel is associated with beta subunits that can modify the inactivation properties of the channel as well as affect expression levels. The C-terminus of the channel is complexed to a PDZ domain protein that is responsible for channel targeting. Mutations in this gene have been associated with myokymia with periodic ataxia (AEMK).Synonyms: HBK1, HUKI, Potassium voltage-gated channel subfamily A member 1, Voltage-gated potassium channel subunit Kv1.1
Molecular Weight:	56466 Da
Gene ID:	3736
NCBI Accession:	<a href="#">NP_000208</a>

## Application Details

Application Notes:	Optimal working dilution should be determined by the investigator.
Restrictions:	For Research Use only

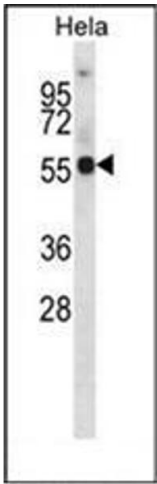
## Handling

Format:	Liquid
Concentration:	0.25 mg/mL
Buffer:	PBS containing 0.09 % (W/V) Sodium Azide as preservative
Preservative:	Sodium azide
Precaution of Use:	This product contains sodium azide: a POISONOUS AND HAZARDOUS SUBSTANCE which should be handled by trained staff only.
Handling Advice:	Avoid repeated freezing and thawing.
Storage:	4 °C/-20 °C
Storage Comment:	Store undiluted at 2-8 °C for one month or (in aliquots) at -20 °C for longer.



**Immunohistochemistry (Paraffin-embedded Sections)**

**Image 1.** Immunohistochemistry analysis in formalin fixed and paraffin embedded human cerebellum tissue reacted with KCNA1 Antibody (Center) followed which was peroxidase conjugated to the secondary antibody and followed by DAB staining.



**Western Blotting**

**Image 2.** Western blot analysis of KCNA1 Antibody (Center) in HeLa cell line lysates (35ug/lane). This demonstrates the KCNA1 antibody detected the KCNA1 protein (arrow).