

Datasheet for ABIN952999

anti-KCND1 antibody (N-Term)[Go to Product page](#)**1** Image

Overview

Quantity:	0.4 mL
Target:	KCND1 (Kcnd1)
Binding Specificity:	AA 117-147, N-Term
Reactivity:	Human
Host:	Rabbit
Clonality:	Polyclonal
Conjugate:	This KCND1 antibody is un-conjugated
Application:	Western Blotting (WB), Enzyme Immunoassay (EIA)

Product Details

Immunogen:	KLH conjugated synthetic peptide between 117-147 amino acids from the N-terminal region of human KCND1
Isotype:	Ig Fraction
Specificity:	This antibody recognizes Human KCND1 (N-term).
Purification:	Protein A column, followed by peptide affinity purification

Target Details

Target:	KCND1 (Kcnd1)
Alternative Name:	KCND1 (Kcnd1 Products)
Background:	Voltage-gated potassium (Kv) channels represent the most complex class of voltage-gated ion

Target Details

channels from both functional and structural standpoints. Their diverse functions include regulating neurotransmitter release, heart rate, insulin secretion, neuronal excitability, epithelial electrolyte transport, smooth muscle contraction, and cell volume. Four sequence-related potassium channel genes - shaker, shaw, shab, and shal - have been identified in Drosophila, and each has been shown to have human homolog(s). This gene encodes a member of the potassium channel, voltage-gated, shal-related subfamily, members of which form voltage-activated A-type potassium ion channels and are prominent in the repolarization phase of the action potential. This gene is expressed at moderate levels in all tissues analyzed, with lower levels in skeletal muscle. Synonyms: Potassium voltage-gated channel subfamily D member 1, Voltage-gated potassium channel subunit Kv4.1

Molecular Weight: 71330 Da

Gene ID: 3750

NCBI Accession: [NP_004970](#)

Application Details

Application Notes: Optimal working dilution should be determined by the investigator.

Restrictions: For Research Use only

Handling

Format: Liquid

Concentration: 0.25 mg/mL

Buffer: PBS containing 0.09 % (W/V) Sodium Azide as preservative

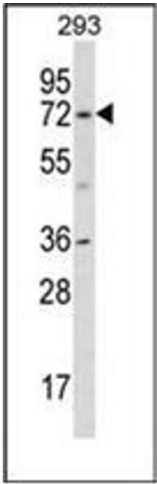
Preservative: Sodium azide

Precaution of Use: This product contains sodium azide: a POISONOUS AND HAZARDOUS SUBSTANCE which should be handled by trained staff only.

Handling Advice: Avoid repeated freezing and thawing.

Storage: 4 °C/-20 °C

Storage Comment: Store undiluted at 2-8 °C for one month or (in aliquots) at -20 °C for longer.



Western Blotting

Image 1. Western blot analysis of KCND1 Antibody (N-term) in 293 cell line lysates (35ug/lane). This demonstrates the KCND1 antibody detected the KCND1 protein (arrow).