

Datasheet for ABIN953001

**anti-KCNE1-Like antibody (Middle Region)**[Go to Product page](#)**1** Image

## Overview

Quantity:	0.4 mL
Target:	KCNE1-Like (KCNE1L)
Binding Specificity:	AA 74-104, Middle Region
Reactivity:	Human
Host:	Rabbit
Clonality:	Polyclonal
Conjugate:	This KCNE1-Like antibody is un-conjugated
Application:	Western Blotting (WB), Enzyme Immunoassay (EIA)

## Product Details

Immunogen:	KLH conjugated synthetic peptide between 74~104 amino acids from the Central region of Human KCE1L
Isotype:	Ig Fraction
Specificity:	This antibody recognizes Human KCE1L (Center).
Purification:	Protein A column, followed by peptide affinity purification

## Target Details

Target:	KCNE1-Like (KCNE1L)
Alternative Name:	KCNE1L ( <a href="#">KCNE1L Products</a> )
Background:	Voltage-gated potassium (Kv) channels represent the most complex class of voltage-gated ion

## Target Details

channels from both functional and structural standpoints. Their diverse functions include regulating neurotransmitter release, heart rate, insulin secretion, neuronal excitability, epithelial electrolyte transport, smooth muscle contraction, and cell volume. This gene encodes a membrane protein which has sequence similarity to the KCNE1 gene product, a member of the potassium channel, voltage-gated, isk-related subfamily. This intronless gene is deleted in AMME contiguous gene syndrome and may be involved in the cardiac and neurologic abnormalities found in the AMME contiguous gene syndrome. Synonyms: AMME syndrome candidate gene 2 protein, AMMECR2 protein, Potassium voltage-gated channel subfamily E member 1-like protein

Molecular Weight: 14993 Da

Gene ID: 23630

NCBI Accession: [NP\\_036414](#)

## Application Details

Application Notes: Optimal working dilution should be determined by the investigator.

Restrictions: For Research Use only

## Handling

Format: Liquid

Concentration: 0.25 mg/mL

Buffer: PBS containing 0.09 % (W/V) Sodium Azide as preservative

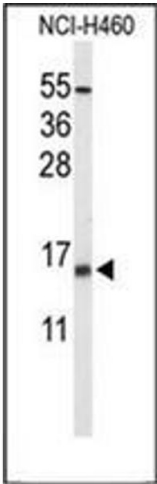
Preservative: Sodium azide

Precaution of Use: This product contains sodium azide: a POISONOUS AND HAZARDOUS SUBSTANCE which should be handled by trained staff only.

Handling Advice: Avoid repeated freezing and thawing.

Storage: 4 °C/-20 °C

Storage Comment: Store undiluted at 2-8 °C for one month or (in aliquots) at -20 °C for longer.



Western Blotting

**Image 1.** Western blot analysis of KCE1L Antibody (Center) in NCI-H460 cell line lysates (35ug/lane). KCE1L (arrow) was detected using the purified Pab.