

Datasheet for ABIN953010

anti-KCNJ8 antibody (N-Term)**2** Images[Go to Product page](#)

Overview

Quantity:	0.4 mL
Target:	KCNJ8
Binding Specificity:	AA 3-33, N-Term
Reactivity:	Human
Host:	Rabbit
Clonality:	Polyclonal
Conjugate:	This KCNJ8 antibody is un-conjugated
Application:	Western Blotting (WB), Immunohistochemistry (Paraffin-embedded Sections) (IHC (p)), Enzyme Immunoassay (EIA)

Product Details

Immunogen:	KLH conjugated synthetic peptide between 3-33 amino acids from the N-terminal region of human KCNJ8
Isotype:	Ig Fraction
Specificity:	This antibody recognizes Human KCNJ8 (N-term).
Purification:	Protein A column, followed by peptide affinity purification

Target Details

Target:	KCNJ8
Alternative Name:	KCNJ8 (KCNJ8 Products)

Target Details

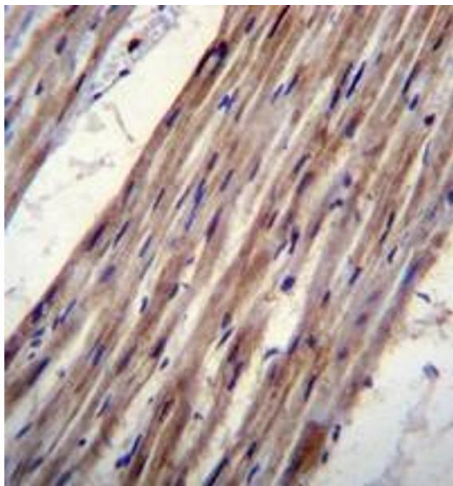
Background:	Potassium channels are present in most mammalian cells, where they participate in a wide range of physiologic responses. The protein encoded by this gene is an integral membrane protein and inward-rectifier type potassium channel. The encoded protein, which has a greater tendency to allow potassium to flow into a cell rather than out of a cell, is controlled by G-proteins. [provided by RefSeq].Synonyms: ATP-sensitive inward rectifier potassium channel 8, Kir6.1, Potassium channel inwardly rectifying subfamily J member 8, uKATP-1
Molecular Weight:	47968 Da
Gene ID:	3764
NCBI Accession:	NP_004973

Application Details

Application Notes:	Optimal working dilution should be determined by the investigator.
Restrictions:	For Research Use only

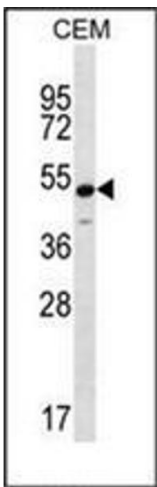
Handling

Format:	Liquid
Concentration:	0.25 mg/mL
Buffer:	PBS containing 0.09 % (W/V) Sodium Azide as preservative
Preservative:	Sodium azide
Precaution of Use:	This product contains sodium azide: a POISONOUS AND HAZARDOUS SUBSTANCE which should be handled by trained staff only.
Handling Advice:	Avoid repeated freezing and thawing.
Storage:	4 °C/-20 °C
Storage Comment:	Store undiluted at 2-8 °C for one month or (in aliquots) at -20 °C for longer.



Immunohistochemistry (Paraffin-embedded Sections)

Image 1. Immunohistochemistry analysis in formalin fixed and paraffin embedded human heart tissue reacted with KCNJ8 Antibody (N-term) followed which was peroxidase conjugated to the secondary antibody and followed by DAB staining.



Western Blotting

Image 2. Western blot analysis of KCNJ8 Antibody (N-term) in CEM cell line lysates (35ug/lane). This demonstrates the KCNJ8 antibody detected the KCNJ8 protein (arrow).