

Datasheet for ABIN953013

anti-KCNMB1 antibody (Middle Region)[Go to Product page](#)**1** Image

Overview

Quantity:	0.4 mL
Target:	KCNMB1
Binding Specificity:	AA 42-72, Middle Region
Reactivity:	Human
Host:	Rabbit
Clonality:	Polyclonal
Conjugate:	This KCNMB1 antibody is un-conjugated
Application:	Western Blotting (WB), Enzyme Immunoassay (EIA)

Product Details

Immunogen:	KLH conjugated synthetic peptide between 42-72 amino acids from the Central region of human KCNMB1
Isotype:	Ig Fraction
Specificity:	This antibody recognizes Human KCNMB1 (Center).
Purification:	Protein A column, followed by peptide affinity purification

Target Details

Target:	KCNMB1
Alternative Name:	KCNMB1 (KCNMB1 Products)
Background:	MaxiK channels are large conductance, voltage and calcium-sensitive potassium channels

Target Details

which are fundamental to the control of smooth muscle tone and neuronal excitability. MaxiK channels can be formed by 2 subunits: the pore-forming alpha subunit and the product of this gene, the modulatory beta subunit. Intracellular calcium regulates the physical association between the alpha and beta subunits. Synonyms: BK channel beta-1, Calcium-activated potassium channel subunit beta-1, Charybdotoxin receptor subunit beta-1, K VCAbeta-1, Maxi K channel beta-1, Slo-beta-1, subfamily M beta-1

Molecular Weight: 21797 Da

Gene ID: 3779

NCBI Accession: [NP_004128](#)

Application Details

Application Notes: Optimal working dilution should be determined by the investigator.

Restrictions: For Research Use only

Handling

Format: Liquid

Concentration: 0.25 mg/mL

Buffer: PBS containing 0.09 % (W/V) Sodium Azide as preservative

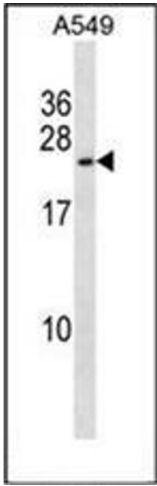
Preservative: Sodium azide

Precaution of Use: This product contains sodium azide: a POISONOUS AND HAZARDOUS SUBSTANCE which should be handled by trained staff only.

Handling Advice: Avoid repeated freezing and thawing.

Storage: 4 °C/-20 °C

Storage Comment: Store undiluted at 2-8 °C for one month or (in aliquots) at -20 °C for longer.



Western Blotting

Image 1. Western blot analysis of KCNMB1 Antibody (Center) in A549 cell line lysates (35ug/lane). This demonstrates the KCNMB1 antibody detected the KCNMB1 protein (arrow).