

Datasheet for ABIN953017  
**anti-KCNRG antibody (C-Term)**[Go to Product page](#)

## 2 Images

## Overview

Quantity:	0.4 mL
Target:	KCNRG
Binding Specificity:	AA 182-210, C-Term
Reactivity:	Human, Mouse
Host:	Rabbit
Clonality:	Polyclonal
Conjugate:	This KCNRG antibody is un-conjugated
Application:	Western Blotting (WB), Immunohistochemistry (Paraffin-embedded Sections) (IHC (p)), Enzyme Immunoassay (EIA)

## Product Details

Immunogen:	KLH conjugated synthetic peptide between 182-210 amino acids from the C-terminal region of human KCNRG
Isotype:	Ig Fraction
Specificity:	This antibody recognizes Human and Mouse KCNRG (C-term).
Purification:	Protein A column, followed by peptide affinity purification

## Target Details

Target:	KCNRG
Alternative Name:	KCNRG ( <a href="#">KCNRG Products</a> )

## Target Details

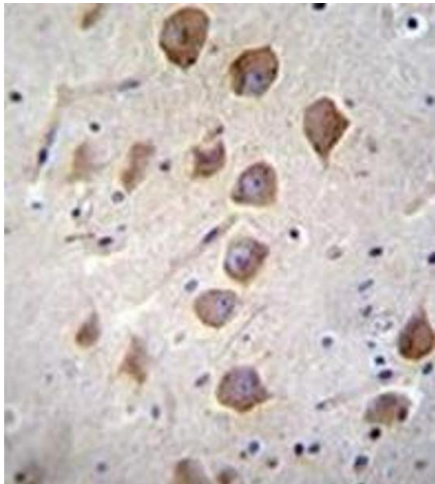
Background:	This gene encodes a member of the tripartite motif (TRIM) family. The TRIM motif includes three zinc-binding domains, a RING, a B-box type 1 and a B-box type 2, and a coiled-coil region. This gene is located on chromosome 13 within the minimal deletion region for B-cell chronic lymphocytic leukemia. Multiple alternatively spliced transcript variants have been found for this gene. Synonyms: CLLD4, KCNRG, Potassium channel regulator, Potassium channel regulatory protein, Protein CLLD4
Molecular Weight:	31048 Da
Gene ID:	10206
NCBI Accession:	<a href="#">NP_001007279</a>

## Application Details

Application Notes:	Optimal working dilution should be determined by the investigator.
Restrictions:	For Research Use only

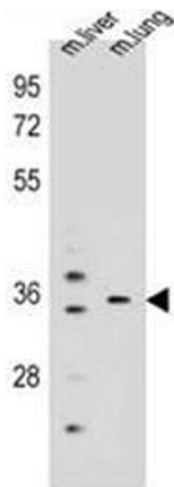
## Handling

Format:	Liquid
Concentration:	0.25 mg/mL
Buffer:	PBS containing 0.09 % (W/V) Sodium Azide as preservative
Preservative:	Sodium azide
Precaution of Use:	This product contains sodium azide: a POISONOUS AND HAZARDOUS SUBSTANCE which should be handled by trained staff only.
Handling Advice:	Avoid repeated freezing and thawing.
Storage:	4 °C/-20 °C
Storage Comment:	Store undiluted at 2-8 °C for one month or (in aliquots) at -20 °C for longer.



**Immunohistochemistry (Paraffin-embedded Sections)**

**Image 1.** Immunohistochemistry analysis in formalin fixed and paraffin embedded human brain tissue reacted with KCNRG Antibody (C-term) followed by peroxidase conjugation of the secondary antibody and DAB staining.



**Western Blotting**

**Image 2.** Western blot analysis of KCNRG Antibody (C-term) in mouse liver,lung tissue lysates (35ug/lane). This demonstrates the KCNRG antibody detected the KCNRG protein (arrow).