

Datasheet for ABIN953018
anti-KCNT2 antibody (C-Term)

3 Images

[Go to Product page](#)

Overview

| | |
|----------------------|---|
| Quantity: | 0.4 mL |
| Target: | KCNT2 |
| Binding Specificity: | AA 1076-1105, C-Term |
| Reactivity: | Human |
| Host: | Rabbit |
| Clonality: | Polyclonal |
| Conjugate: | This KCNT2 antibody is un-conjugated |
| Application: | Western Blotting (WB), Flow Cytometry (FACS), Immunohistochemistry (Paraffin-embedded Sections) (IHC (p)), Enzyme Immunoassay (EIA) |

Product Details

| | |
|---------------|--|
| Immunogen: | KLH conjugated synthetic peptide between 1076-1105 amino acids from the C-terminal region of human KCNT2 / SLICK |
| Isotype: | Ig Fraction |
| Specificity: | This antibody recognizes Human KCNT2 / SLICK (C-term). |
| Purification: | Protein A column, followed by peptide affinity purification |

Target Details

| | |
|-------------------|--|
| Target: | KCNT2 |
| Alternative Name: | KCNT2 / SLICK (KCNT2 Products) |

Target Details

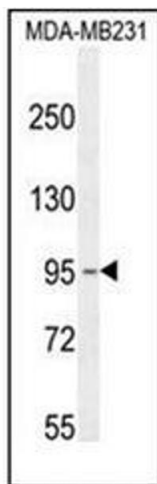
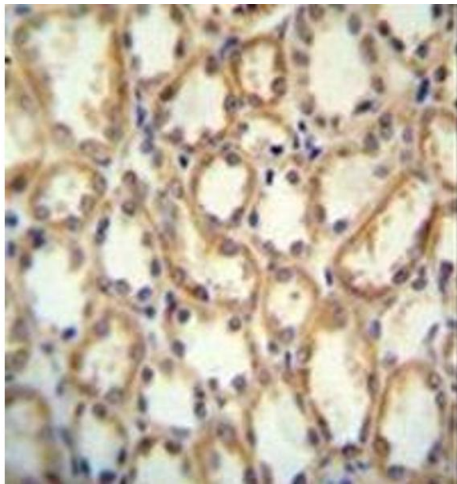
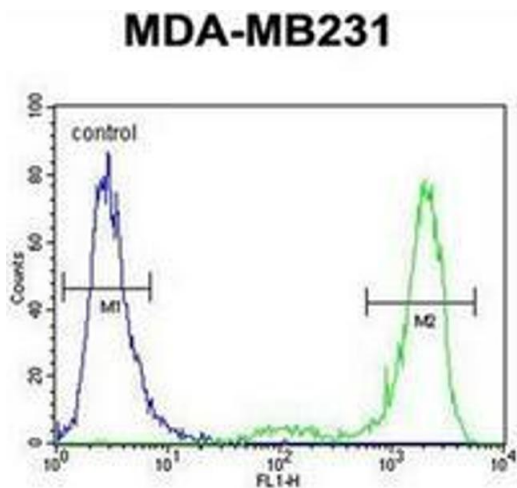
| | |
|-------------------|---|
| Background: | Synonyms: Potassium channel subfamily T member 2, Sequence like an intermediate conductance potassium channel subunit, Slo2.1, Sodium and chloride-activated ATP-sensitive potassium channel Slo2.1 |
| Molecular Weight: | 130501 Da |
| Gene ID: | 343450 |
| NCBI Accession: | NP_940905 |

Application Details

| | |
|--------------------|--|
| Application Notes: | Optimal working dilution should be determined by the investigator. |
| Restrictions: | For Research Use only |

Handling

| | |
|--------------------|--|
| Format: | Liquid |
| Concentration: | 0.25 mg/mL |
| Buffer: | PBS containing 0.09 % (W/V) Sodium Azide as preservative |
| Preservative: | Sodium azide |
| Precaution of Use: | This product contains sodium azide: a POISONOUS AND HAZARDOUS SUBSTANCE which should be handled by trained staff only. |
| Handling Advice: | Avoid repeated freezing and thawing. |
| Storage: | 4 °C/-20 °C |
| Storage Comment: | Store undiluted at 2-8 °C for one month or (in aliquots) at -20 °C for longer. |



Flow Cytometry

Image 1. Flow cytometric analysis of MDA-MB231 cells using KCNT2 / SLICK Antibody (C-term) Cat.-No AP52320PU-N (right histogram) compared to a negative control cell (left histogram). FITC-conjugated goat-anti-rabbit secondary antibodies were used for the analysis.

Immunohistochemistry (Paraffin-embedded Sections)

Image 2. immunohistochemistry analysis in formalin fixed and paraffin embedded human kidney tissue reacted with KCNT2 / SLICK Antibody (C-term) followed by peroxidase conjugation of the secondary antibody and DAB staining.

Western Blotting

Image 3. Western blot analysis of KCNT2 / SLICK Antibody (C-term) in MDA-MB231 cell line lysates (35ug/lane). This demonstrates the KCNT2 antibody detected the KCNT2 protein (arrow).