

Datasheet for ABIN953023

anti-KCTD8 antibody (C-Term)**2** Images[Go to Product page](#)

Overview

Quantity:	0.4 mL
Target:	KCTD8
Binding Specificity:	AA 441-470, C-Term
Reactivity:	Human, Mouse
Host:	Rabbit
Clonality:	Polyclonal
Conjugate:	This KCTD8 antibody is un-conjugated
Application:	Western Blotting (WB), Immunohistochemistry (Paraffin-embedded Sections) (IHC (p)), Enzyme Immunoassay (EIA)

Product Details

Immunogen:	KLH conjugated synthetic peptide between 441-470 amino acids from the C-terminal region of human KCTD8
Isotype:	Ig Fraction
Specificity:	This antibody recognizes Human KCTD8 (C-term).
Purification:	Protein A column, followed by peptide affinity purification

Target Details

Target:	KCTD8
Alternative Name:	KCTD8 (KCTD8 Products)

Target Details

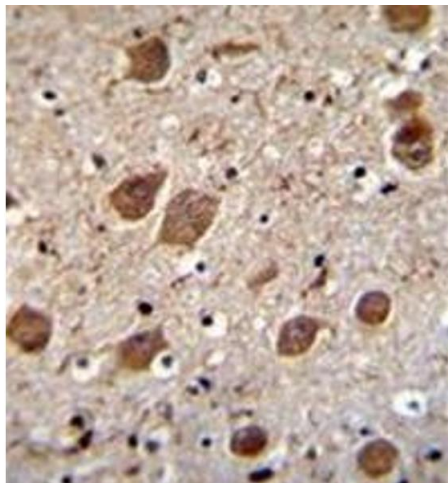
Background:	Auxiliary subunit of GABA-B receptors that determine the pharmacology and kinetics of the receptor response. Increases agonist potency and markedly alter the G-protein signaling of the receptors by accelerating onset and promoting desensitization (By similarity).Synonyms: BTB/POZ domain-containing protein KCTD8
Molecular Weight:	52440 Da
Gene ID:	386617
NCBI Accession:	NP_938167
Pathways:	Regulation of G-Protein Coupled Receptor Protein Signaling

Application Details

Application Notes:	Optimal working dilution should be determined by the investigator.
Restrictions:	For Research Use only

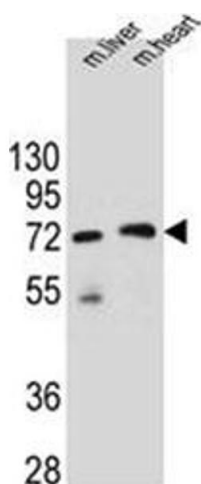
Handling

Format:	Liquid
Concentration:	0.25 mg/mL
Buffer:	PBS containing 0.09 % (W/V) Sodium Azide as preservative
Preservative:	Sodium azide
Precaution of Use:	This product contains sodium azide: a POISONOUS AND HAZARDOUS SUBSTANCE which should be handled by trained staff only.
Handling Advice:	Avoid repeated freezing and thawing.
Storage:	4 °C/-20 °C
Storage Comment:	Store undiluted at 2-8 °C for one month or (in aliquots) at -20 °C for longer.



Immunohistochemistry (Paraffin-embedded Sections)

Image 1. Immunohistochemistry analysis in formalin fixed and paraffin embedded human brain tissue reacted with KCTD8 Antibody (C-term) followed which was peroxidase conjugated to the secondary antibody and followed by DAB staining.



Western Blotting

Image 2. Western blot analysis of KCTD8 Antibody (C-term) in mouse liver and heart tissue lysates (35ug/lane). This demonstrates the KCTD8 antibody detected the KCTD8 protein (arrow).