



[Go to Product page](#)

Datasheet for ABIN953033

anti-Keratin 33A antibody (N-Term)

1 Image

Overview

Quantity:	0.4 mL
Target:	Keratin 33A (KRT33A)
Binding Specificity:	AA 63-93, N-Term
Reactivity:	Human, Mouse
Host:	Rabbit
Clonality:	Polyclonal
Conjugate:	This Keratin 33A antibody is un-conjugated
Application:	Western Blotting (WB), Enzyme Immunoassay (EIA)

Product Details

Immunogen:	KLH conjugated synthetic peptide between 63-93 amino acids from the N-terminal region of human KT33A
Isotype:	Ig Fraction
Specificity:	This antibody reacts to KT33A.
Cross-Reactivity (Details):	Species reactivity (tested):Mouse.
Purification:	Affinity chromatography on Protein A

Target Details

Target:	Keratin 33A (KRT33A)
Alternative Name:	Keratin-33A (KRT33A) (KRT33A Products)

Target Details

Background: The protein encoded by this gene is a member of the keratin gene family. It is one of the type I hair keratin genes which are clustered in a region of chromosome 17q12-q21 and have the same direction of transcription. As a type I hair keratin, it is an acidic protein which heterodimerizes with type II keratins to form hair and nails. There are two isoforms of this protein, encoded by two separate genes, KRTHA3A and KRTHA3B. [provided by RefSeq].Synonyms: HHA3-I, HKA3A, Hair keratin type I Ha3-I, K33A, KRTHA3A, Keratin type I cuticular Ha3-I

Molecular Weight: 45940 Da

Gene ID: 3883

NCBI Accession: [NP_004129](#)

Application Details

Application Notes: Optimal working dilution should be determined by the investigator.

Restrictions: For Research Use only

Handling

Format: Liquid

Concentration: 0.25 mg/mL

Buffer: PBS, 0,09 % sodium azide

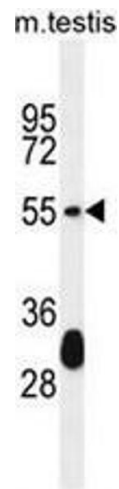
Preservative: Sodium azide

Precaution of Use: This product contains sodium azide: a POISONOUS AND HAZARDOUS SUBSTANCE which should be handled by trained staff only.

Handling Advice: Avoid repeated freezing and thawing.

Storage: 4 °C/-20 °C

Storage Comment: Store the antibody undiluted at 2-8 °C for one month or (in aliquots) at -20 °C for longer.



Western Blotting

Image 1. KT33A Antibody (N-term) western blot analysis in mouse testis tissue lysates (35µg/lane). This demonstrates the KT33A antibody detected the KT33A protein (arrow).