



[Go to Product page](#)

Datasheet for ABIN953057

## anti-KIAA1324-Like antibody (N-Term)

### 4 Images

#### Overview

Quantity:	0.4 mL
Target:	KIAA1324-Like (KIAA1324L)
Binding Specificity:	AA 109-138, N-Term
Reactivity:	Human, Mouse
Host:	Rabbit
Clonality:	Polyclonal
Conjugate:	This KIAA1324-Like antibody is un-conjugated
Application:	Western Blotting (WB), Flow Cytometry (FACS), Immunohistochemistry (Paraffin-embedded Sections) (IHC (p)), Enzyme Immunoassay (EIA)

#### Product Details

Immunogen:	KLH conjugated synthetic peptide between 109-138 amino acids from the N-terminal region of human KIAA1324L
Isotype:	Ig Fraction
Specificity:	This antibody recognizes Human and Mouse KIAA1324L (N-term).
Purification:	Protein A column, followed by peptide affinity purification

#### Target Details

Target:	KIAA1324-Like (KIAA1324L)
Alternative Name:	KIAA1324L ( <a href="#">KIAA1324L Products</a> )

## Target Details

Background:	Synonyms: EIG121L, UPF0577 protein KIAA1324-like
Molecular Weight:	113842 Da
Gene ID:	222223
NCBI Accession:	<a href="#">NP_001136221</a>

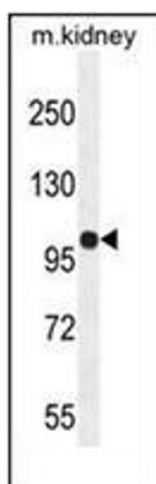
## Application Details

Application Notes:	Optimal working dilution should be determined by the investigator.
Restrictions:	For Research Use only

## Handling

Format:	Liquid
Concentration:	0.25 mg/mL
Buffer:	PBS containing 0.09 % (W/V) Sodium Azide as preservative
Preservative:	Sodium azide
Precaution of Use:	This product contains sodium azide: a POISONOUS AND HAZARDOUS SUBSTANCE which should be handled by trained staff only.
Handling Advice:	Avoid repeated freezing and thawing.
Storage:	4 °C/-20 °C
Storage Comment:	Store undiluted at 2-8 °C for one month or (in aliquots) at -20 °C for longer.

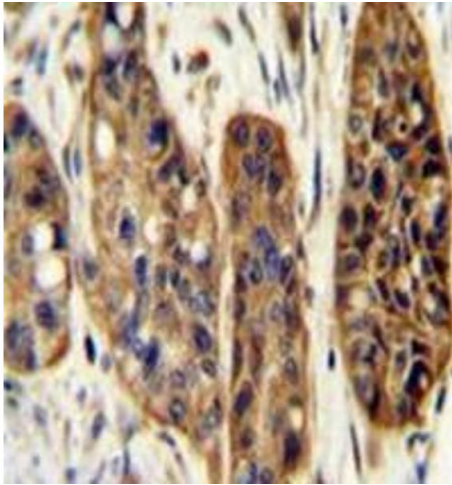
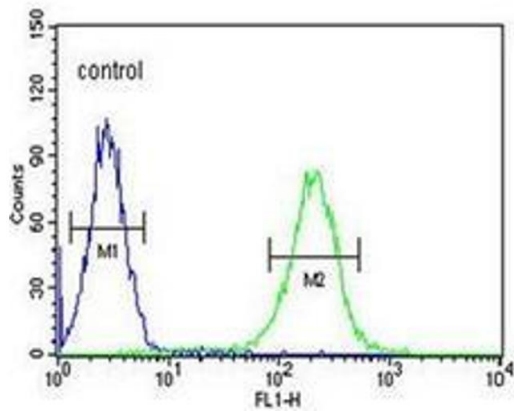
## Images



### Western Blotting

**Image 1.** Western blot analysis of KIAA1324L Antibody (N-term) in mouse kidney tissue lysates (35ug/lane). This demonstrates the KIAA1324L antibody detected the KIAA1324L protein (arrow).

## K562



### Flow Cytometry

**Image 2.** Flow cytometric analysis of K562 cells using KIAA1324L Antibody (N-term) Cat.-No AP52349PU-N (right histogram) compared to a negative control cell (left histogram). FITC-conjugated goat-anti-rabbit secondary antibodies were used for the analysis.

### Immunohistochemistry (Paraffin-embedded Sections)

**Image 3.** Immunohistochemistry analysis in formalin fixed and paraffin embedded human esophagus carcinoma reacted with KIAA1324L Antibody (N-term) followed which was peroxidase conjugated to the secondary antibody and allowed by DAB staining.

Please check the [product details page](#) for more images. Overall 4 images are available for ABIN953057.