



Datasheet for ABIN953063
anti-KIAA1586 antibody (N-Term)



[Go to Product page](#)

4 Images

Overview

| | |
|----------------------|---|
| Quantity: | 0.4 mL |
| Target: | KIAA1586 |
| Binding Specificity: | AA 194-224, N-Term |
| Reactivity: | Human |
| Host: | Rabbit |
| Clonality: | Polyclonal |
| Conjugate: | This KIAA1586 antibody is un-conjugated |
| Application: | Western Blotting (WB), Flow Cytometry (FACS), Immunofluorescence (IF), Immunohistochemistry (Paraffin-embedded Sections) (IHC (p)), Enzyme Immunoassay (EIA) |

Product Details

| | |
|---------------|---|
| Immunogen: | KLH conjugated synthetic peptide between 194-224 amino acids from the N-terminal region of human KIAA1586 |
| Isotype: | Ig Fraction |
| Specificity: | This antibody recognizes Human and Mouse KIAA1586 (N-term). |
| Purification: | Protein A column, followed by peptide affinity purification |

Target Details

| | |
|-------------------|--|
| Target: | KIAA1586 |
| Alternative Name: | KIAA1586 (KIAA1586 Products) |

Target Details

| | |
|-------------------|---------------------------|
| Molecular Weight: | 89673 Da |
| Gene ID: | 57691 |
| NCBI Accession: | NP_065982 |

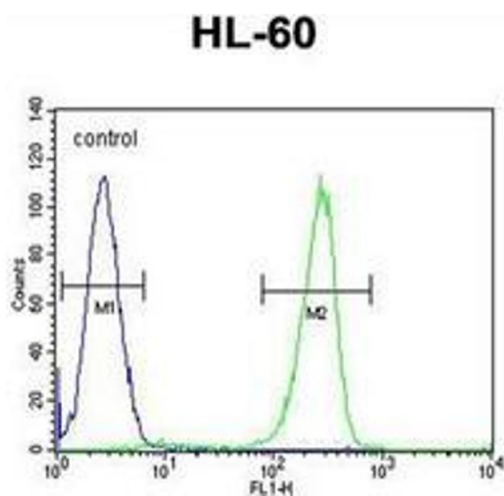
Application Details

| | |
|--------------------|--|
| Application Notes: | Optimal working dilution should be determined by the investigator. |
| Restrictions: | For Research Use only |

Handling

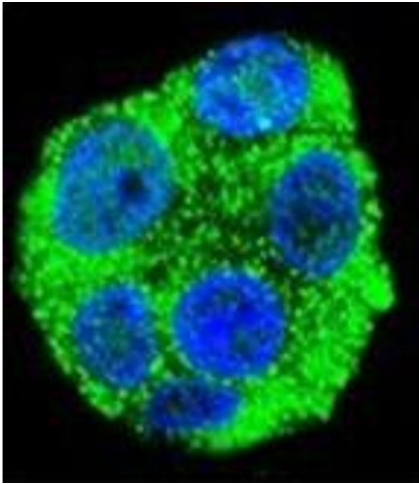
| | |
|--------------------|--|
| Format: | Liquid |
| Concentration: | 0.25 mg/mL |
| Buffer: | PBS containing 0.09 % (W/V) Sodium Azide as preservative |
| Preservative: | Sodium azide |
| Precaution of Use: | This product contains sodium azide: a POISONOUS AND HAZARDOUS SUBSTANCE which should be handled by trained staff only. |
| Handling Advice: | Avoid repeated freezing and thawing. |
| Storage: | 4 °C/-20 °C |
| Storage Comment: | Store undiluted at 2-8 °C for one month or (in aliquots) at -20 °C for longer. |

Images



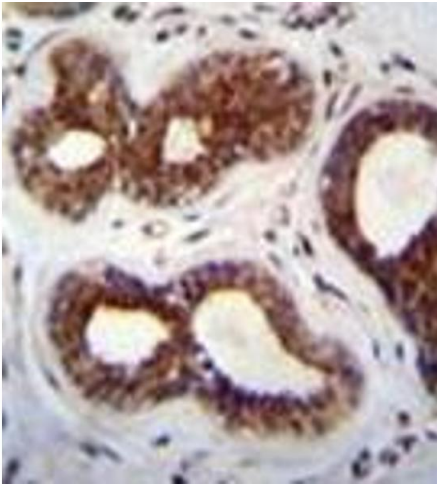
Flow Cytometry

Image 1. Flow cytometric analysis of HL-60 cells using KIAA1586 Antibody (N-term) Cat.-No AP52354PU-N (right histogram) compared to a negative control cell (left histogram). FITC-conjugated goat-anti-rabbit secondary antibodies were used for the analysis.



Immunofluorescence

Image 2. Confocal immunofluorescent analysis of KIAA1586 Antibody (N-term) Cat.-No AP52354PU-N with HepG2 cell followed by Alexa Fluor 488-conjugated goat anti-rabbit IgG (green). DAPI was used to stain the cell nuclear (blue).



Immunohistochemistry (Paraffin-embedded Sections)

Image 3. Immunohistochemistry analysis in formalin fixed and paraffin embedded human breast tissue recated with KIAA1586 Antibody (N-term) followed by peroxidase conjugation of the secondary antibody and DAB staining.

Please check the [product details page](#) for more images. Overall 4 images are available for ABIN953063.