

Datasheet for ABIN953074

**anti-KIF5C antibody****2** Images[Go to Product page](#)

## Overview

Quantity:	0.4 mL
Target:	KIF5C
Reactivity:	Mouse, Human
Host:	Rabbit
Clonality:	Polyclonal
Conjugate:	This KIF5C antibody is un-conjugated
Application:	Western Blotting (WB), Immunohistochemistry (Paraffin-embedded Sections) (IHC (p)), Enzyme Immunoassay (EIA)

## Product Details

Immunogen:	KLH conjugated synthetic peptide selected from Human KIF5C Genename: KIF5C
Isotype:	Ig Fraction
Specificity:	This antibody is specific for Kif5C-2
Cross-Reactivity (Details):	Species reactivity (tested): Human, Mouse.
Purification:	Protein A Chromatography followed by peptide affinity purification

## Target Details

Target:	KIF5C
Alternative Name:	KIF5C ( <a href="#">KIF5C Products</a> )
Background:	Kinesins are a superfamily of microtubule-associated motor proteins involved in a variety of

## Target Details

cellular processes including membranous organelle transport and cell division. Kinesin has been found in a variety of organisms and cell types and is subject to spatial and temporal regulation. These proteins have a modular structure including a conserved motor domain of approximately 350 amino acids, which is responsible for microtubule binding and ATP hydrolysis. In addition to the motor domain, subfamily members share common domain organization, exhibit sequence similarity, motility properties, and cellular functions outside of the motor domain. There are currently three known Kinesin 5 family members denoted as A, B, and C. Kinesin 5A and kinesin 5C appear to be exclusively neuronal, whereas kinesin 5B appears to be ubiquitous in its expression. Synonyms: KIAA0531, KIF5C, Kinesin heavy chain isoform 5C, Kinesin heavy chain neuron-specific 2, NKHC2

Molecular Weight: 109495 Da

Gene ID: 3800

NCBI Accession: [NP\\_004513](#)

## Application Details

Application Notes: Optimal working dilution should be determined by the investigator.

Restrictions: For Research Use only

## Handling

Format: Liquid

Concentration: 0.25 mg/mL

Buffer: PBS, 0.09 % Sodium Azide

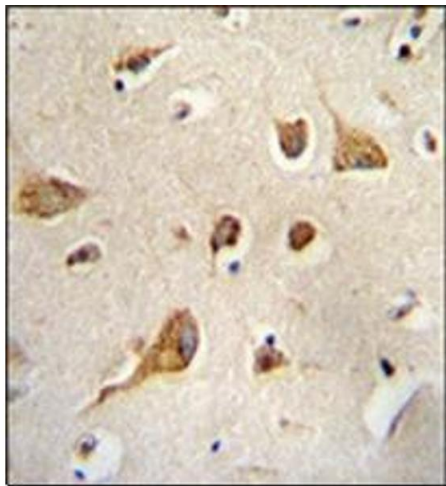
Preservative: Sodium azide

Precaution of Use: This product contains sodium azide: a POISONOUS AND HAZARDOUS SUBSTANCE which should be handled by trained staff only.

Handling Advice: Avoid repeated freezing and thawing.

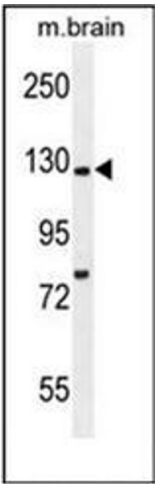
Storage: 4 °C/-20 °C

Storage Comment: Store undiluted at 2-8 °C for one month or (in aliquots) at -20 °C for longer.



**Immunohistochemistry (Paraffin-embedded Sections)**

**Image 1.** Formalin Fixed, Paraffin Embedded Human brain tissue stained with Kif5C-2 Antibody followed by peroxidase conjugation of the secondary antibody and DAB staining. This data demonstrates the use of Kif5C-2 Antibody for immunohistochemistry. Clinical relevance has not been evaluated.



**Western Blotting**

**Image 2.** Western blot analysis in Mouse brain tissue lysates (35ug/lane) using Kif5C-2 Antibody . This demonstrates the Kif5C-2 antibody detected the Kif5C-2 protein (arrow).