



Datasheet for ABIN953077
anti-KLLN antibody (C-Term)



[Go to Product page](#)

1 Image

Overview

Quantity:	0.4 mL
Target:	KLLN
Binding Specificity:	AA 143-171, C-Term
Reactivity:	Human
Host:	Rabbit
Clonality:	Polyclonal
Conjugate:	This KLLN antibody is un-conjugated
Application:	Western Blotting (WB), Enzyme Immunoassay (EIA)

Product Details

Immunogen:	KLH conjugated synthetic peptide between 143-171 amino acids from the C-terminal region of human KILLIN
Isotype:	Ig Fraction
Specificity:	This antibody recognizes Human KILLIN (C-term).
Purification:	Protein A column, followed by peptide affinity purification

Target Details

Target:	KLLN
Alternative Name:	KILLIN (KLLN Products)
Background:	DNA-binding protein involved in S phase checkpoint control-coupled apoptosis by mediating

Target Details

TP53/p53-induced apoptosis. Has the ability to inhibit DNA synthesis and S phase arrest coupled to apoptosis. Has affinity to both double-and single-stranded DNA.Synonyms: Killin

Molecular Weight: 19958 Da

Gene ID: 100144748

NCBI Accession: [NP_001119521](#)

Application Details

Application Notes: Optimal working dilution should be determined by the investigator.

Restrictions: For Research Use only

Handling

Format: Liquid

Concentration: 0.25 mg/mL

Buffer: PBS containing 0.09 % (W/V) Sodium Azide as preservative

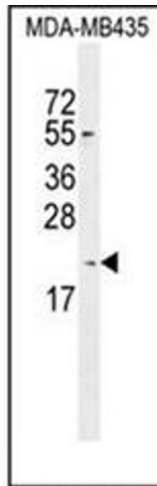
Preservative: Sodium azide

Precaution of Use: This product contains sodium azide: a POISONOUS AND HAZARDOUS SUBSTANCE which should be handled by trained staff only.

Handling Advice: Avoid repeated freezing and thawing.

Storage: 4 °C/-20 °C

Storage Comment: Store undiluted at 2-8 °C for one month or (in aliquots) at -20 °C for longer.



Western Blotting

Image 1. Western blot analysis of KILLIN Antibody (C-term) in MDA-MB435 cell line lysates (35ug/lane). This demonstrates the KILLIN antibody detected the KILLIN protein (arrow).