

Datasheet for ABIN953078
anti-KSR2 antibody (C-Term)[Go to Product page](#)

3 Images

Overview

Quantity:	0.4 mL
Target:	KSR2
Binding Specificity:	C-Term
Reactivity:	Human
Host:	Rabbit
Clonality:	Polyclonal
Conjugate:	This KSR2 antibody is un-conjugated
Application:	Western Blotting (WB), Immunohistochemistry (Paraffin-embedded Sections) (IHC (p)), Enzyme Immunoassay (EIA)

Product Details

Immunogen:	KLH conjugated synthetic peptide selected from the C-terminal region of human KSR2
Isotype:	Ig Fraction
Specificity:	This antibody reacts to KSR2.
Cross-Reactivity (Details):	Species reactivity (tested):Human.
Purification:	Affinity chromatography on Protein A

Target Details

Target:	KSR2
Alternative Name:	Kinase Suppressor of Ras 2 (KSR2 Products)

Target Details

Background:	Location-regulated scaffold connecting MEK to RAF. Blocks MAP3K8 kinase activity and MAP3K8-mediated signaling. Acts as a negative regulator of MAP3K3-mediated activation of ERK, JNK and NF-kappa-B pathways, inhibiting MAP3K3-mediated interleukin-8 production.Synonyms: KSR-2, KSR2, hKSR-2, hKSR2
-------------	--

Molecular Weight:	107632 Da
-------------------	-----------

Gene ID:	283455
----------	--------

NCBI Accession:	NP_775869
-----------------	---------------------------

Application Details

Application Notes:	Optimal working dilution should be determined by the investigator.
--------------------	--

Restrictions:	For Research Use only
---------------	-----------------------

Handling

Format:	Liquid
---------	--------

Concentration:	0.25 mg/mL
----------------	------------

Buffer:	PBS, 0.09 % (W/V) sodium azide
---------	--------------------------------

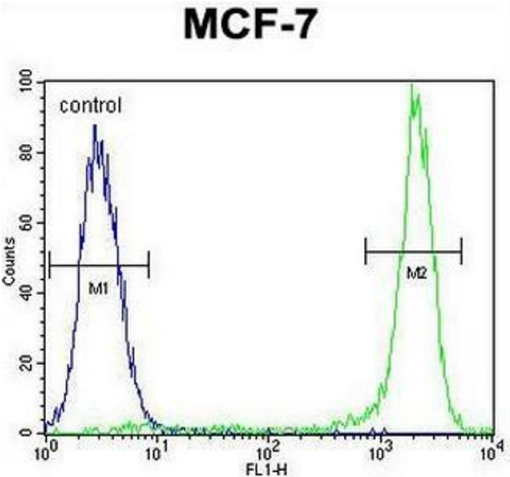
Preservative:	Sodium azide
---------------	--------------

Precaution of Use:	This product contains sodium azide: a POISONOUS AND HAZARDOUS SUBSTANCE which should be handled by trained staff only.
--------------------	--

Handling Advice:	Avoid repeated freezing and thawing.
------------------	--------------------------------------

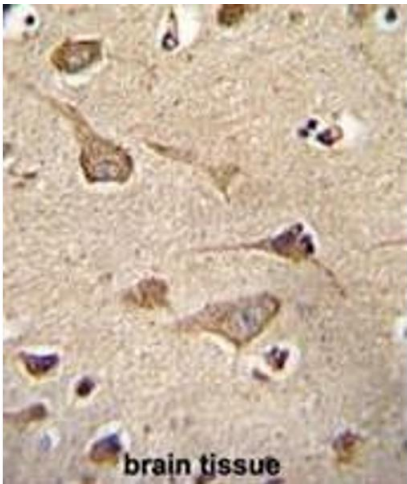
Storage:	4 °C/-20 °C
----------	-------------

Storage Comment:	Store the antibody undiluted at 2-8 °C for one month or (in aliquots) at -20 °C for longer.
------------------	---



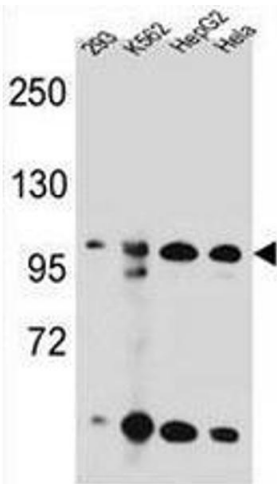
Flow Cytometry

Image 1. KSR2 Antibody (C-term) flow cytometric analysis of MCF-7 cells (right histogram) compared to a negative control cell (left histogram). FITC-conjugated goat-anti-rabbit secondary antibodies were used for the analysis.



Immunohistochemistry (Paraffin-embedded Sections)

Image 2. KSR2 Antibody (C-term) immunohistochemistry analysis in formalin fixed and paraffin embedded human brain tissue followed by peroxidase conjugation of the secondary antibody and DAB staining. This data demonstrates the use of KSR2 Antibody (C-term) for immunohistochemistry. Clinical relevance has not been evaluated.



Western Blotting

Image 3. KSR2 Antibody (C-term) western blot analysis in 293, K562, HepG2, Hela cell line lysates (35 µg/lane). This demonstrates the KSR2 antibody detected the KSR2 protein (arrow).