

Datasheet for ABIN953079
anti-KNG1 antibody (N-Term)

4 Images

[Go to Product page](#)

Overview

Quantity:	0.4 mL
Target:	KNG1
Binding Specificity:	AA 145-174, N-Term
Reactivity:	Human
Host:	Rabbit
Clonality:	Polyclonal
Conjugate:	This KNG1 antibody is un-conjugated
Application:	Western Blotting (WB), Immunohistochemistry (Paraffin-embedded Sections) (IHC (p)), Flow Cytometry (FACS), Enzyme Immunoassay (EIA)

Product Details

Immunogen:	KLH conjugated synthetic peptide between 145-174 amino acids from the N-terminal region of Human Kininogen-1 Genename: KNG1
Isotype:	Ig Fraction
Specificity:	This antibody recognizes Human Kininogen-1 (N-term).
Purification:	Protein A column, followed by peptide affinity purification

Target Details

Target:	KNG1
Alternative Name:	Kininogen-1 (KNG1 Products)

Target Details

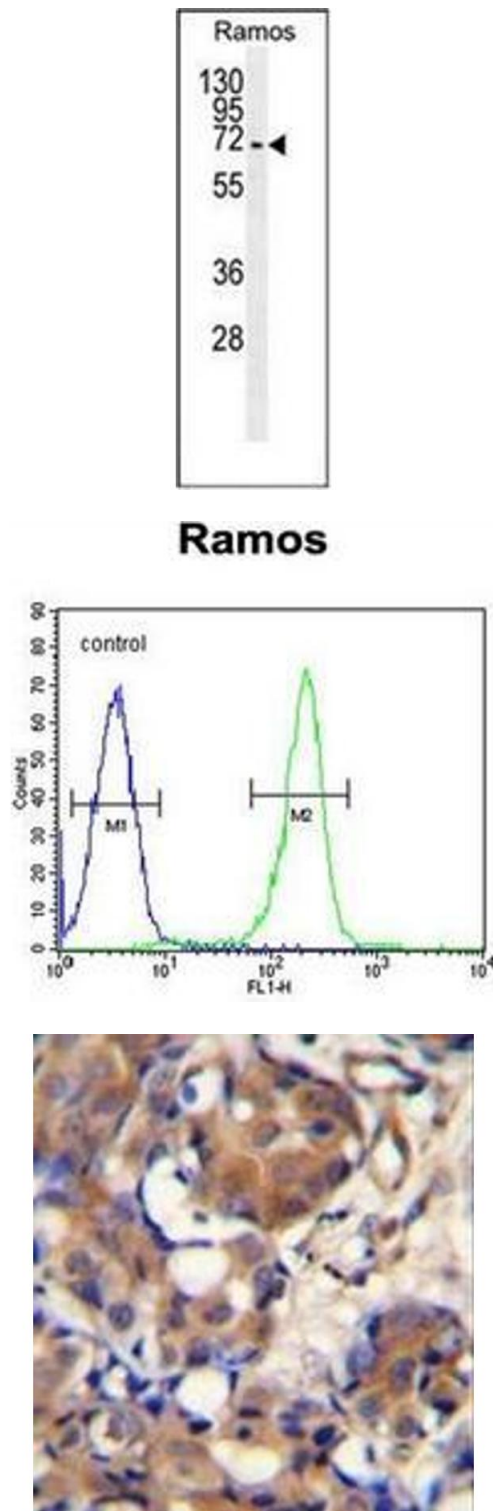
Background:	This gene uses alternative splicing to generate two different proteins- high molecular weight kininogen (HMWK) and low molecular weight kininogen (LMWK). HMWK is essential for blood coagulation and assembly of the kallikrein-kinin system. Also, bradykinin, a peptide causing numerous physiological effects, is released from HMWK. In contrast to HMWK, LMWK is not involved in blood coagulation. Three transcript variants encoding different isoforms have been found for this gene.Synonyms: Alpha-2-thiol proteinase inhibitor, BDK, Fitzgerald factor, High molecular weight kininogen, KNG, KNG1, Williams-Fitzgerald-Flaujeac factor
Molecular Weight:	71957 Da
Gene ID:	3827
NCBI Accession:	NP_000884
Pathways:	ACE Inhibitor Pathway , Glycosaminoglycan Metabolic Process

Application Details

Application Notes:	Optimal working dilution should be determined by the investigator.
Restrictions:	For Research Use only

Handling

Format:	Liquid
Concentration:	0.25 mg/mL
Buffer:	PBS containing 0.09 % (W/V) Sodium Azide as preservative
Preservative:	Sodium azide
Precaution of Use:	This product contains sodium azide: a POISONOUS AND HAZARDOUS SUBSTANCE which should be handled by trained staff only.
Handling Advice:	Avoid repeated freezing and thawing.
Storage:	4 °C/-20 °C
Storage Comment:	Store undiluted at 2-8 °C for one month or (in aliquots) at -20 °C for longer.



Western Blotting

Image 1. Western blot analysis using Kininogen-1 Antibody (N-term) Cat.-No AP52400PU-N in Ramos cell line lysates (35ug/lane). This demonstrates the KNG1 antibody detected the KNG1 protein (arrow).

Flow Cytometry

Image 2. Flow cytometric analysis of Ramos cells using Kininogen-1 Antibody (N-term) Cat.-No AP52400PU-N (right histogram) compared to a negative control cell (left histogram). FITC-conjugated goat-anti-rabbit secondary antibodies were used for the analysis.

Immunohistochemistry (Paraffin-embedded Sections)

Image 3. Immunohistochemistry analysis in formalin fixed and paraffin embedded human breast carcinoma reacted with Kininogen-1 Antibody (N-term) followed which was peroxidase conjugated to the secondary antibody and followed by DAB staining.

Please check the [product details page](#) for more images. Overall 4 images are available for ABIN953079.