

Datasheet for ABIN953083

anti-KIR3DL3 antibody (Middle Region)**3** Images[Go to Product page](#)

Overview

Quantity:	0.4 mL
Target:	KIR3DL3
Binding Specificity:	AA 138-167, Middle Region
Reactivity:	Human
Host:	Rabbit
Clonality:	Polyclonal
Conjugate:	This KIR3DL3 antibody is un-conjugated
Application:	Western Blotting (WB), Flow Cytometry (FACS), Immunohistochemistry (Paraffin-embedded Sections) (IHC (p)), Enzyme Immunoassay (EIA)

Product Details

Immunogen:	KLH conjugated synthetic peptide between 138~167 amino acids from the Center region of human KIR3DL3
Isotype:	Ig Fraction
Specificity:	This antibody recognizes Human KIR3DL3 (Center).
Purification:	Protein A column, followed by peptide affinity purification

Target Details

Target:	KIR3DL3
Alternative Name:	KIR3DL3 (KIR3DL3 Products)

Target Details

Background: KIR3DL3 is transmembrane glycoproteins expressed by natural killer cells and subsets of T cells. This protein are polymorphic and highly homologous and they are found in a cluster on chromosome 19q13.4 within the 1 Mb leukocyte receptor complex (LRC).Synonyms: CD158 antigen-like family member Z, CD158Z, CD_antigen=CD158z, Flags: Precursor, KIR3DL7, KIRC1, Killer cell immunoglobulin-like receptor 3DL3, Killer cell inhibitory receptor 1

Molecular Weight: 44928 Da

Gene ID: 100133046

NCBI Accession: [NP_703144](#)

Application Details

Application Notes: Optimal working dilution should be determined by the investigator.

Restrictions: For Research Use only

Handling

Format: Liquid

Concentration: 0.25 mg/mL

Buffer: PBS containing 0.09 % (W/V) Sodium Azide as preservative

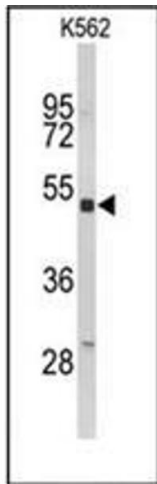
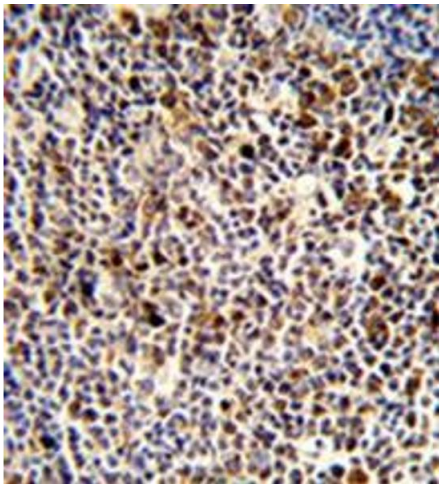
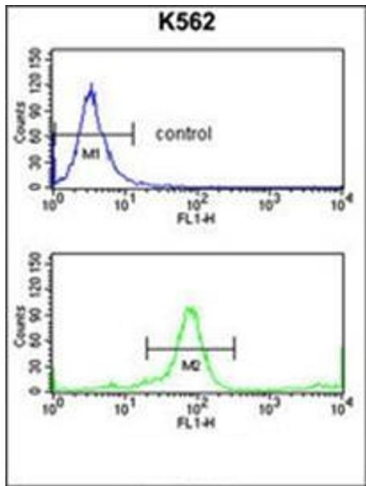
Preservative: Sodium azide

Precaution of Use: This product contains sodium azide: a POISONOUS AND HAZARDOUS SUBSTANCE which should be handled by trained staff only.

Handling Advice: Avoid repeated freezing and thawing.

Storage: 4 °C/-20 °C

Storage Comment: Store undiluted at 2-8 °C for one month or (in aliquots) at -20 °C for longer.



Flow Cytometry

Image 1. Flow cytometry analysis of K562 cells using KIR3DL3 Antibody (Center) Cat.-No AP52374PU-N (bottom histogram) compared to a negative control cell (top histogram). FITC-conjugated goat-anti-rabbit secondary antibodies were used for the analysis.

Immunohistochemistry (Paraffin-embedded Sections)

Image 2. Formalin-fixed and paraffin-embedded human tonsil reacted with KIR3DL3 Antibody (Center) followed which was peroxidase conjugated to the secondary antibody, followed by DAB staining. This data demonstrates the use of this antibody for immunohistochemistry; clinical relevance has not been evaluated.

Western Blotting

Image 3. Western blot analysis of KIR3DL3 Antibody (Center) in K562 cell line lysates (35ug/lane). KIR3DL3 (arrow) was detected using the purified Pab.