

Datasheet for ABIN953087
anti-KLC2 antibody (N-Term)

3 Images

[Go to Product page](#)

Overview

Quantity:	0.4 mL
Target:	KLC2
Binding Specificity:	AA 127-156, N-Term
Reactivity:	Human, Mouse
Host:	Rabbit
Clonality:	Polyclonal
Conjugate:	This KLC2 antibody is un-conjugated
Application:	Western Blotting (WB), Flow Cytometry (FACS), Immunohistochemistry (Paraffin-embedded Sections) (IHC (p)), Enzyme Immunoassay (EIA)

Product Details

Immunogen:	KLH conjugated synthetic peptide between 127-156 amino acids from the N-terminal region of human KLC2
Isotype:	Ig Fraction
Specificity:	This antibody recognizes Human and Mouse KLC2 (N-term).
Purification:	Protein A column, followed by peptide affinity purification

Target Details

Target:	KLC2
Alternative Name:	KLC2 (KLC2 Products)

Target Details

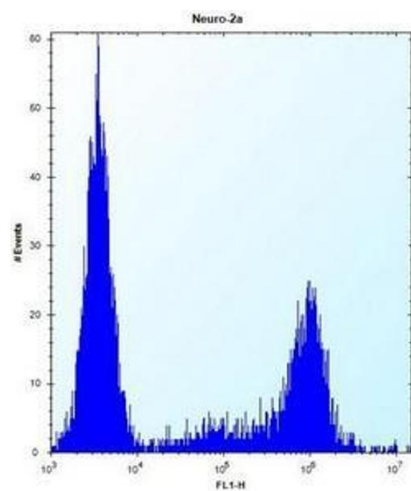
Background:	Kinesin is a molecular motor that generates ATP-dependent movement of vesicles and organelles along microtubules. Kinesin consists of 2 light chains, such as KLC2, and 2 heavy chains (see KIF5B, MIM 602809) in a 1:1 stoichiometric ratio (Rahman et al., 1998 [PubMed 9624122]).Synonyms: KLC 2, KLC2, Kinesin light chain 2
Molecular Weight:	68935 Da
Gene ID:	64837
NCBI Accession:	NP_001128246

Application Details

Application Notes:	Optimal working dilution should be determined by the investigator.
Restrictions:	For Research Use only

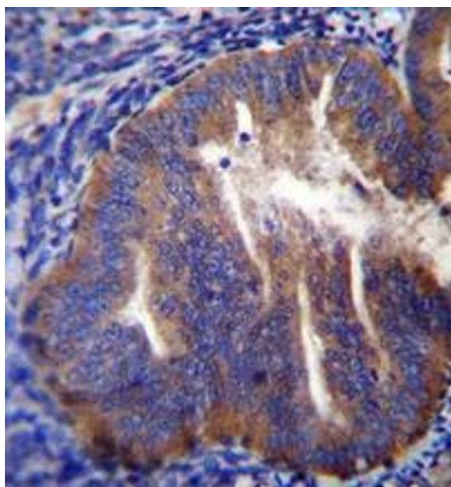
Handling

Format:	Liquid
Concentration:	0.25 mg/mL
Buffer:	PBS containing 0.09 % (W/V) Sodium Azide as preservative
Preservative:	Sodium azide
Precaution of Use:	This product contains sodium azide: a POISONOUS AND HAZARDOUS SUBSTANCE which should be handled by trained staff only.
Handling Advice:	Avoid repeated freezing and thawing.
Storage:	4 °C/-20 °C
Storage Comment:	Store undiluted at 2-8 °C for one month or (in aliquots) at -20 °C for longer.



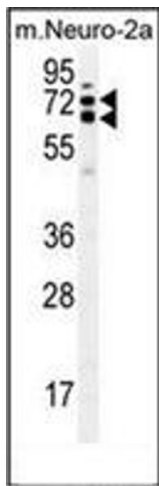
Flow Cytometry

Image 1. flow cytometric analysis of Neuro-2a cells using KLC2 Antibody (N-term) Cat.-No AP52378PU-N (right histogram) compared to a negative control cell (left histogram). FITC-conjugated donkey-anti-rabbit secondary antibodies were used for the analysis.



Immunohistochemistry (Paraffin-embedded Sections)

Image 2. Immunohistochemistry analysis in formalin fixed and paraffin embedded human uterus tissue reacted with KLC2 Antibody (N-term) followed which was peroxidase conjugated to the secondary antibody and followed by DAB staining.



Western Blotting

Image 3. Western blot analysis of KLC2 Antibody (N-term) in mouse Neuro-2a cell line lysates (35ug/lane). This demonstrates the KLC2 antibody detected the KLC2 protein (arrow).