

Datasheet for ABIN953091

anti-KLHDC1 antibody (N-Term)**2** Images[Go to Product page](#)

Overview

Quantity:	0.4 mL
Target:	KLHDC1
Binding Specificity:	AA 72-101, N-Term
Reactivity:	Human, Mouse
Host:	Rabbit
Clonality:	Polyclonal
Conjugate:	This KLHDC1 antibody is un-conjugated
Application:	Western Blotting (WB), Immunohistochemistry (Paraffin-embedded Sections) (IHC (p)), Enzyme Immunoassay (EIA)

Product Details

Immunogen:	KLH conjugated synthetic peptide between 72-101 amino acids from the N-terminal region of human KLHDC1
Isotype:	Ig Fraction
Specificity:	This antibody recognizes Human and Mouse KLHDC1 (N-term).
Purification:	Protein A column, followed by peptide affinity purification

Target Details

Target:	KLHDC1
Alternative Name:	KLHDC1 (KLHDC1 Products)

Target Details

Background:	KLHDC1 contains 6 Kelch repeats and is widely expressed, with high levels in skeletal muscle, pancreas and liver. KLHDC1 and KLHDC2 have differential localization and activity in cultured mammalian cells. The exact function of KLHDC1 remains unknown.Synonyms: KLHDC1, Kelch domain-containing protein 1, MSTP025
Molecular Weight:	46720 Da
Gene ID:	122773
NCBI Accession:	NP_751943

Application Details

Application Notes:	Optimal working dilution should be determined by the investigator.
Restrictions:	For Research Use only

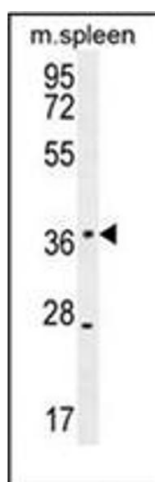
Handling

Format:	Liquid
Concentration:	0.25 mg/mL
Buffer:	PBS containing 0.09 % (W/V) Sodium Azide as preservative
Preservative:	Sodium azide
Precaution of Use:	This product contains sodium azide: a POISONOUS AND HAZARDOUS SUBSTANCE which should be handled by trained staff only.
Handling Advice:	Avoid repeated freezing and thawing.
Storage:	4 °C/-20 °C
Storage Comment:	Store undiluted at 2-8 °C for one month or (in aliquots) at -20 °C for longer.



Immunohistochemistry (Paraffin-embedded Sections)

Image 1. Immunohistochemistry analysis in formalin fixed and paraffin embedded human skeletal muscle reacted with KLHDC1 Antibody (N-term) followed which was peroxidase conjugated to the secondary antibody and followed by DAB staining. This data demonstrates the use of the KLHDC1 antibody (N-term) for immunohistochemistry. Clinical relevance has not been evaluated.



Western Blotting

Image 2. Western blot analysis of KLHDC1 Antibody (N-term) in mouse spleen tissue lysates (35ug/lane). This demonstrates the KLHDC1 antibody detected the KLHDC1 protein (arrow).