

Datasheet for ABIN953100
anti-Kallikrein 12 antibody (Middle Region)[Go to Product page](#)

1 Image

Overview

| | |
|----------------------|---|
| Quantity: | 0.4 mL |
| Target: | Kallikrein 12 (KLK12) |
| Binding Specificity: | AA 84-113, Middle Region |
| Reactivity: | Human |
| Host: | Rabbit |
| Clonality: | Polyclonal |
| Conjugate: | This Kallikrein 12 antibody is un-conjugated |
| Application: | Western Blotting (WB), Enzyme Immunoassay (EIA) |

Product Details

| | |
|---------------|--|
| Immunogen: | KLH conjugated synthetic peptide between 84-113 amino acids from the Central region of Human KLK12 / Kallikrein-12 |
| Isotype: | Ig Fraction |
| Specificity: | This antibody recognizes Human KLK12 / Kallikrein-12 (Center). |
| Purification: | Protein A column, followed by peptide affinity purification |

Target Details

| | |
|-------------------|--|
| Target: | Kallikrein 12 (KLK12) |
| Alternative Name: | KLK12 / Kallikrein-12 (KLK12 Products) |
| Background: | Kallikreins are a subgroup of serine proteases having diverse physiological functions. Growing |

Target Details

evidence suggests that many kallikreins are implicated in carcinogenesis and some have potential as novel cancer and other disease biomarkers. This gene is one of the fifteen kallikrein subfamily members located in a cluster on chromosome 19. Alternate splicing of this gene results in three transcript variants encoding different isoforms. [provided by RefSeq].Synonyms: KLK-L5, KLKL5, Kallikrein-like protein 5

Molecular Weight: 26734 Da

Gene ID: 43849

NCBI Accession: [NP_062544](#)

Pathways: [Complement System](#)

Application Details

Application Notes: Optimal working dilution should be determined by the investigator.

Restrictions: For Research Use only

Handling

Format: Liquid

Concentration: 0.25 mg/mL

Buffer: PBS containing 0.09 % (W/V) Sodium Azide as preservative

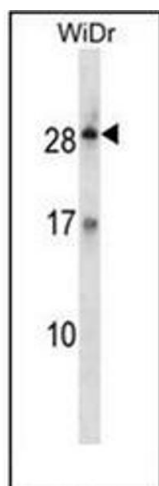
Preservative: Sodium azide

Precaution of Use: This product contains sodium azide: a POISONOUS AND HAZARDOUS SUBSTANCE which should be handled by trained staff only.

Handling Advice: Avoid repeated freezing and thawing.

Storage: 4 °C/-20 °C

Storage Comment: Store undiluted at 2-8 °C for one month or (in aliquots) at -20 °C for longer.



Western Blotting

Image 1. Western blot analysis of KLK12 / Kallikrein-12 Antibody (Center) in WiDr cell line lysates (35ug/lane). This demonstrates the KLK12 antibody detected the KLK12 protein (arrow).