

Datasheet for ABIN953102
anti-Kallikrein 15 antibody (Middle Region)[Go to Product page](#)

2 Images

Overview

Quantity:	0.4 mL
Target:	Kallikrein 15 (KLK15)
Binding Specificity:	AA 79-106, Middle Region
Reactivity:	Human
Host:	Rabbit
Clonality:	Polyclonal
Conjugate:	This Kallikrein 15 antibody is un-conjugated
Application:	Western Blotting (WB), Immunohistochemistry (Paraffin-embedded Sections) (IHC (p)), Enzyme Immunoassay (EIA)

Product Details

Immunogen:	KLH conjugated synthetic peptide between 79-106 amino acids from the Central region of Human KLK15 / Kallikrein-15
Isotype:	Ig Fraction
Specificity:	This antibody recognizes Human KLK15 / Kallikrein-15 (Center).
Purification:	Protein A column, followed by peptide affinity purification

Target Details

Target:	Kallikrein 15 (KLK15)
Alternative Name:	KLK15 / Kallikrein-15 (KLK15 Products)

Target Details

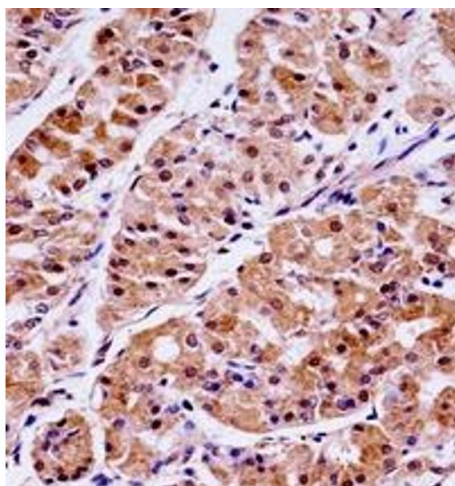
Background:	Kallikreins are a subgroup of serine proteases having diverse physiological functions. Growing evidence suggests that many kallikreins are implicated in carcinogenesis and some have potential as novel cancer and other disease biomarkers. This gene is one of the fifteen kallikrein subfamily members located in a cluster on chromosome 19. In prostate cancer, this gene has increased expression, which indicates its possible use as a diagnostic or prognostic marker for prostate cancer. The gene contains multiple polyadenylation sites and alternative splicing results in multiple transcript variants encoding distinct isoforms.Synonyms: ACO protease
Molecular Weight:	18kd
Gene ID:	55554
NCBI Accession:	NP_059979
Pathways:	Complement System

Application Details

Application Notes:	Optimal working dilution should be determined by the investigator.
Restrictions:	For Research Use only

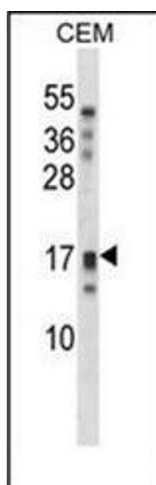
Handling

Format:	Liquid
Concentration:	0.25 mg/mL
Buffer:	PBS containing 0.09 % (W/V) Sodium Azide as preservative
Preservative:	Sodium azide
Precaution of Use:	This product contains sodium azide: a POISONOUS AND HAZARDOUS SUBSTANCE which should be handled by trained staff only.
Handling Advice:	Avoid repeated freezing and thawing.
Storage:	4 °C/-20 °C
Storage Comment:	Store undiluted at 2-8 °C for one month or (in aliquots) at -20 °C for longer.



Immunohistochemistry (Paraffin-embedded Sections)

Image 1. Immunohistochemistry analysis in formalin fixed and paraffin embedded human stomach tissue reacted with KLK15 / Kallikrein-15 Antibody (Center) followed by peroxidase conjugation of the secondary antibody and DAB staining.



Western Blotting

Image 2. Western blot analysis of KLK15 / Kallikrein-15 Antibody (Center) in CEM cell line lysates (35ug/lane). This demonstrates the KLK15 antibody detected the KLK15 protein (arrow).