

Datasheet for ABIN953103

anti-Kallikrein 9 antibody (Middle Region)**2** Images[Go to Product page](#)

Overview

Quantity:	0.4 mL
Target:	Kallikrein 9 (KLK9)
Binding Specificity:	AA 81-111, Middle Region
Reactivity:	Human
Host:	Rabbit
Clonality:	Polyclonal
Conjugate:	This Kallikrein 9 antibody is un-conjugated
Application:	Western Blotting (WB), Immunohistochemistry (Paraffin-embedded Sections) (IHC (p)), Enzyme Immunoassay (EIA)

Product Details

Immunogen:	KLH conjugated synthetic peptide between 81-111 amino acids from the Central region of Human KLK9 / Kallikrein-9
Isotype:	Ig Fraction
Specificity:	This antibody recognizes Human KLK19 / Kallikrein-19 (Center).
Purification:	Protein A column, followed by peptide affinity purification

Target Details

Target:	Kallikrein 9 (KLK9)
Alternative Name:	KLK9 / Kallikrein-9 (KLK9 Products)

Target Details

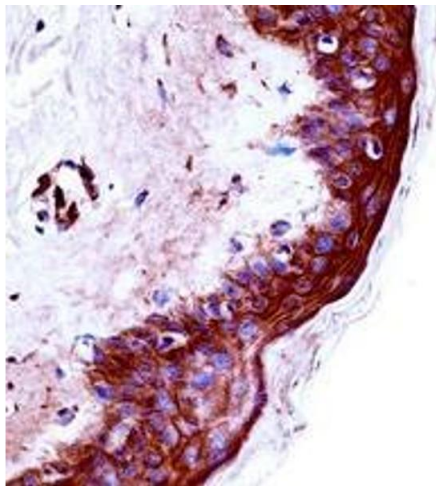
Background:	The protein encoded by this gene is a kallikrein-related serine protease. This gene is activated by steroid hormones in a human breast cancer cell line, making it a good marker for cancer detection. The encoded protein is found primarily in the cytoplasm.Synonyms: KLK-L3, KLKL3, Kallikrein-like protein 3
Molecular Weight:	27513 Da
Gene ID:	284366
NCBI Accession:	NP_036447
Pathways:	Complement System

Application Details

Application Notes:	Optimal working dilution should be determined by the investigator.
Restrictions:	For Research Use only

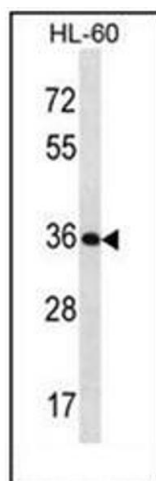
Handling

Format:	Liquid
Concentration:	0.5 mg/mL
Buffer:	PBS containing 0.09 % (W/V) Sodium Azide as preservative
Preservative:	Sodium azide
Precaution of Use:	This product contains sodium azide: a POISONOUS AND HAZARDOUS SUBSTANCE which should be handled by trained staff only.
Handling Advice:	Avoid repeated freezing and thawing.
Storage:	4 °C/-20 °C
Storage Comment:	Store undiluted at 2-8 °C for one month or (in aliquots) at -20 °C for longer.



Immunohistochemistry (Paraffin-embedded Sections)

Image 1. Immunohistochemistry analysis in formalin fixed and paraffin embedded human skin tissue reacted with KLK9 / Kallikrein-9 Antibody (Center) followed by peroxidase conjugation of the secondary antibody and DAB staining.



Western Blotting

Image 2. Western blot analysis of KLK9 / Kallikrein-9 Antibody (Center) in HL-60 cell line lysates (35ug/lane). This demonstrates the KLK9 antibody detected the KLK9 protein (arrow).