

Datasheet for ABIN953105  
**anti-KLRC1 antibody (N-Term)**

## 2 Images

[Go to Product page](#)

## Overview

Quantity:	0.4 mL
Target:	KLRC1
Binding Specificity:	AA 1-30, N-Term
Reactivity:	Human
Host:	Rabbit
Clonality:	Polyclonal
Conjugate:	This KLRC1 antibody is un-conjugated
Application:	Western Blotting (WB), Immunofluorescence (IF), Enzyme Immunoassay (EIA)

## Product Details

Immunogen:	KLH conjugated synthetic peptide between 1-30 amino acids from the N-terminal region of human KLRC1 / CD159a
Isotype:	Ig Fraction
Specificity:	This antibody recognizes Human KLRC1 / CD159a (N-term).
Purification:	Protein A column, followed by peptide affinity purification

## Target Details

Target:	KLRC1
Alternative Name:	KLRC1 / CD159a ( <a href="#">KLRC1 Products</a> )
Background:	Natural killer (NK) cells are lymphocytes that can mediate lysis of certain tumor cells and virus-

## Target Details

infected cells without previous activation. They can also regulate specific humoral and cell-mediated immunity. The protein encoded by this gene belongs to the killer cell lectin-like receptor family, also called NKG2 family, which is a group of transmembrane proteins preferentially expressed in NK cells. This family of proteins is characterized by the type II membrane orientation and the presence of a C-type lectin domain. This protein forms a complex with another family member, KLRD1/CD94, and has been implicated in the recognition of the MHC class I HLA-E molecules in NK cells. The genes of NKG2 family members form a killer cell lectin-like receptor gene cluster on chromosome 12. Four alternatively spliced transcript variants encoding two distinct isoforms have been observed. [provided by RefSeq]. Synonyms: CD159 antigen-like family member A, CD159a, KLRC1, NK cell receptor A, NKG2-A/B-activating NK receptor, NKG2-A/NKG2-B type II integral membrane protein, NKG2A

Molecular Weight: 26287 Da

Gene ID: 3821

NCBI Accession: [NP\\_002250](#)

## Application Details

Application Notes: Optimal working dilution should be determined by the investigator.

Restrictions: For Research Use only

## Handling

Format: Liquid

Concentration: 0.25 mg/mL

Buffer: PBS containing 0.09 % (W/V) Sodium Azide as preservative

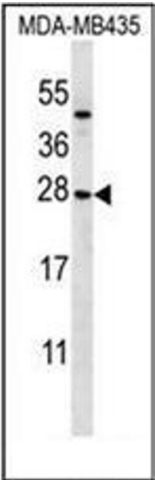
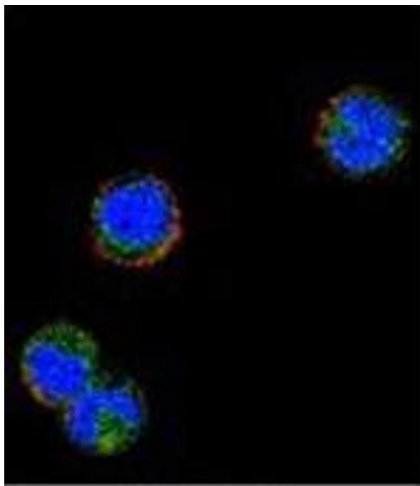
Preservative: Sodium azide

Precaution of Use: This product contains sodium azide: a POISONOUS AND HAZARDOUS SUBSTANCE which should be handled by trained staff only.

Handling Advice: Avoid repeated freezing and thawing.

Storage: 4 °C/-20 °C

Storage Comment: Store undiluted at 2-8 °C for one month or (in aliquots) at -20 °C for longer.



### Immunofluorescence

**Image 1.** Confocal immunofluorescent analysis of KLRC1 / CD159a Antibody (N-term) Cat.-No AP52396PU-N with MDA-MB435 cell followed by Alexa Fluor 488-conjugated goat anti-rabbit IgG (green). Actin filaments have been labeled with Alexa Fluor 555 phalloidin (red). DAPI was used to stain the cell nuclear (blue).

### Western Blotting

**Image 2.** Western blot analysis of KLRC1 / CD159a Antibody (N-term) in MDA-MB435 cell line lysates (35ug/lane). This demonstrates the KLRC1 antibody detected the KLRC1 protein (arrow).